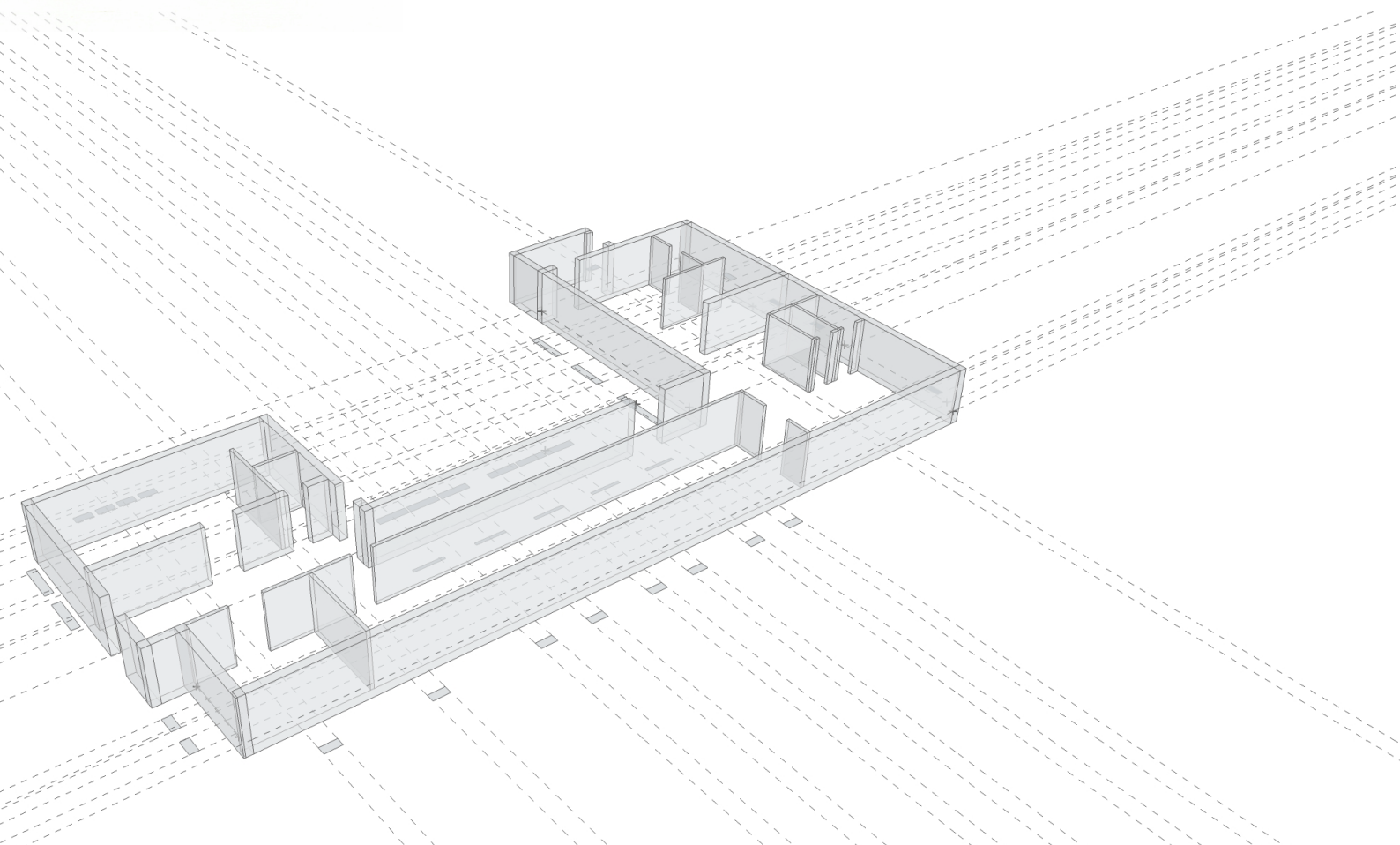
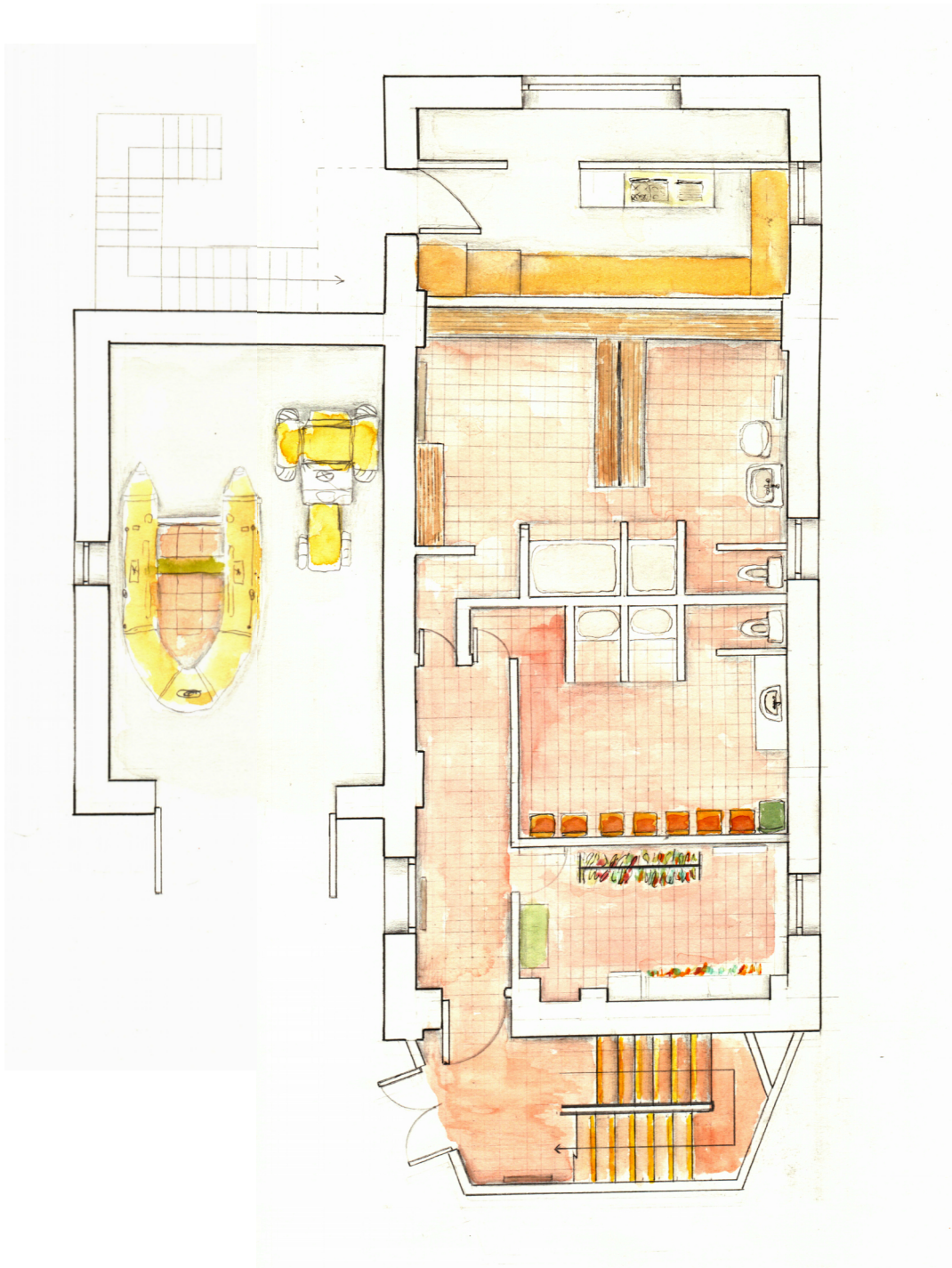


*Milosz Cwiklinski*  
**DesignWorks 2020-2021**

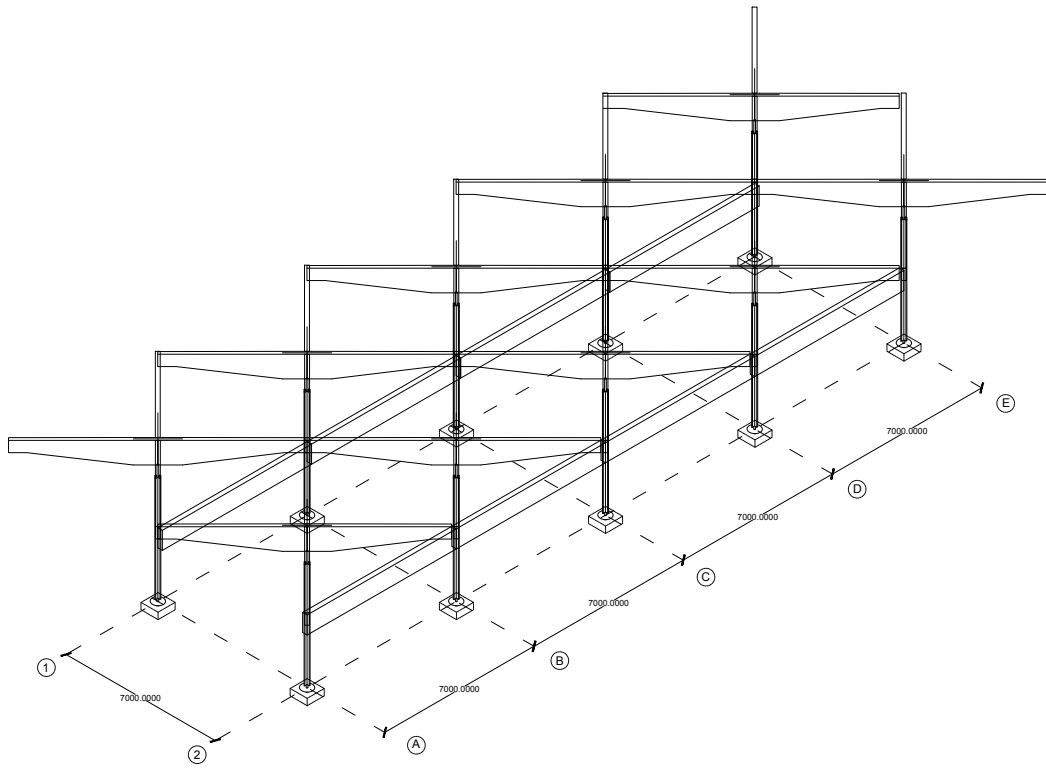




*The sense of place: Charles Rennie Mackintosh in modern day  
Glasgow*



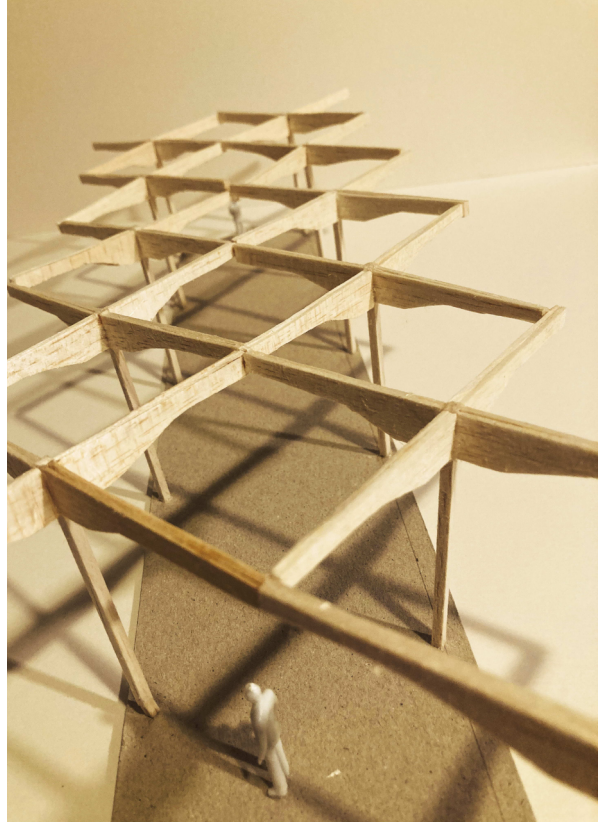
*Ground floor plan of the existing Sailing Club building in St Andrews.*



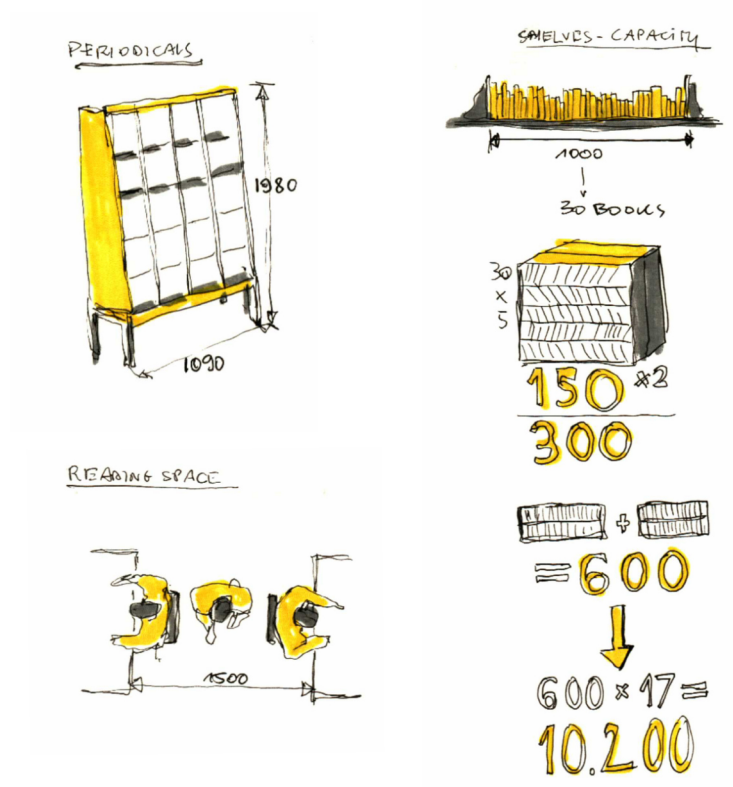
*Isometric drawing showing the structural structural bracing,  
grid lines, labels and dimensions*



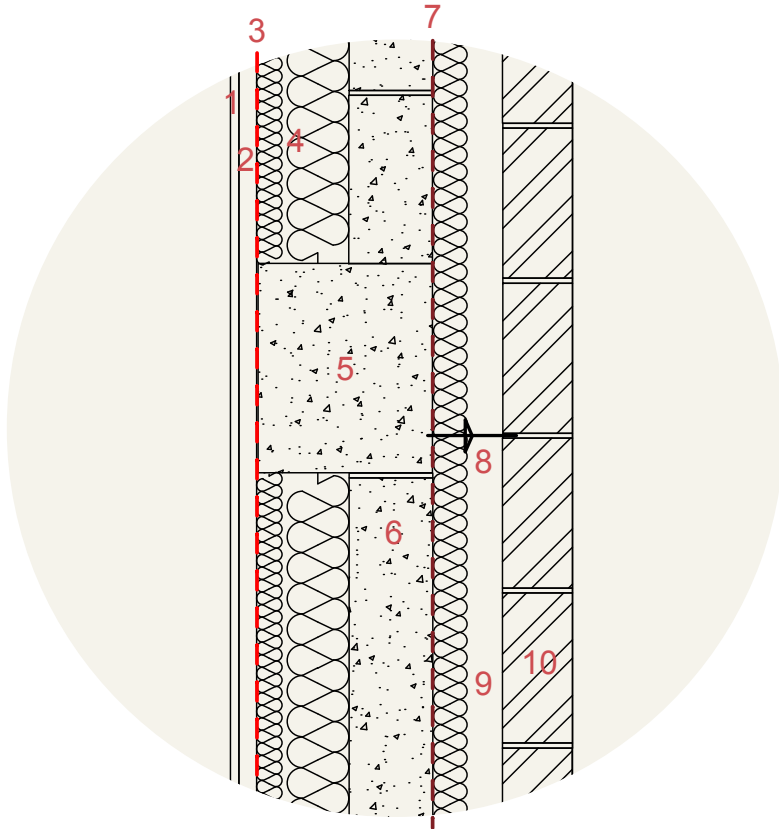
*St Andrews Sailing Club – roof testing model*



*St Andrews Sailing Club – roof testing model*

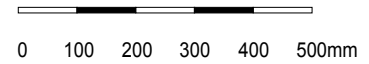


*Study of metric data for the library project – spatial arrangements for shelving and sitting areas*



## WALL DETAIL

1. Inner leaf -  
Plasterboard (12.5mm)
2. Battens (25mm)
3. Vapour control layer
4. Insulation
5. Precast concrete column
6. Concrete blocks
7. Breathable membrane
8. Ashlar block connectors  
- ties with retaining clips
9. Cavity (50mm)
10. Outer leaf - ashlar blocks  
(with 10mm mortar)



*1:5 Main exterior wall technical detail  
(The Library Project)*



## BALCONY DETAIL

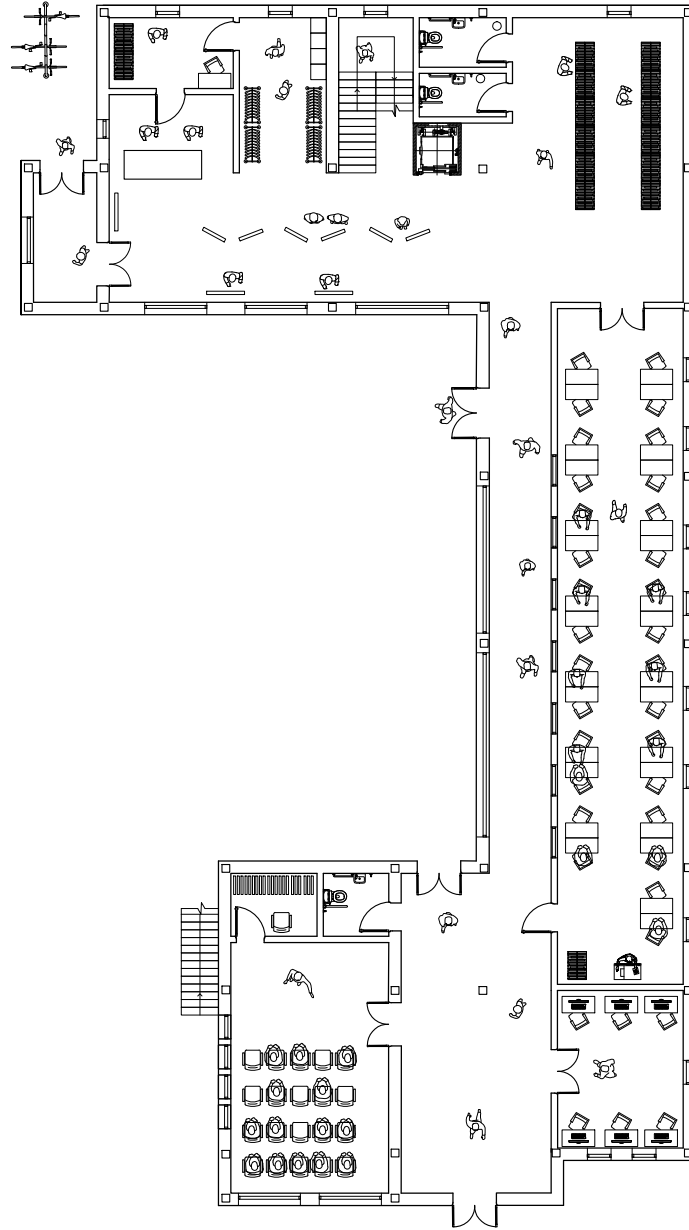
1. Triple glazed window
2. Window frame
3. Window sill
4. Insulated cavity closer (30min fire rated)
5. Flashing over cill
6. 80 X 200mm Timber frame
7. 30 x 50mm Battens
8. Breathable membrane
9. Inner leaf - Plasterboard (12.5mm)
10. Internal floor finish with insulation
11. Precast concrete slab
12. Precast concrete beam
13. Precast beam and block floor
14. Vapour control layer
15. Concrete blocks
16. Hempcrete panels
17. block connectors
18. Steel lintel with ESP insulation
19. Cavity tray over lintel

0 100 200 300 400 500mm

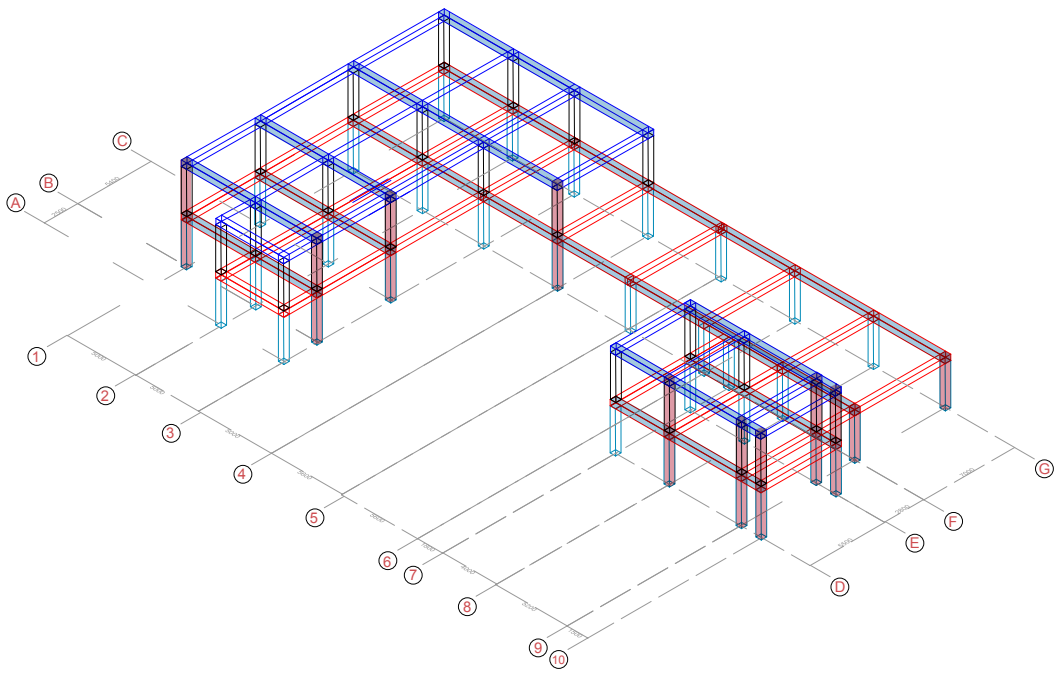
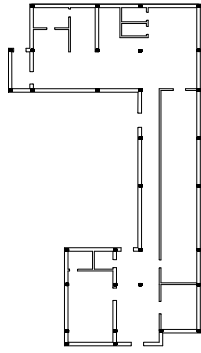
1:5 Balcony technical detail  
(The Library Project)

# G FLOOR

2025



Ground floor plan (The Library Project)



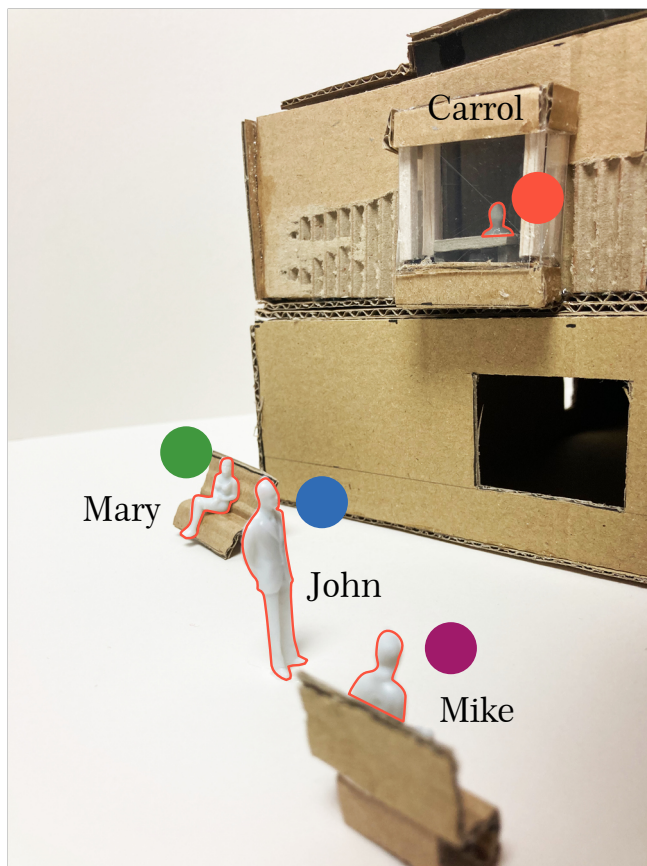
*Structural model (The Library Project)*



STUDY CARRELS

*Bay window - study carrels  
(St Andrews Library Project)*

## SOCIALISING AT THE LIBRARY



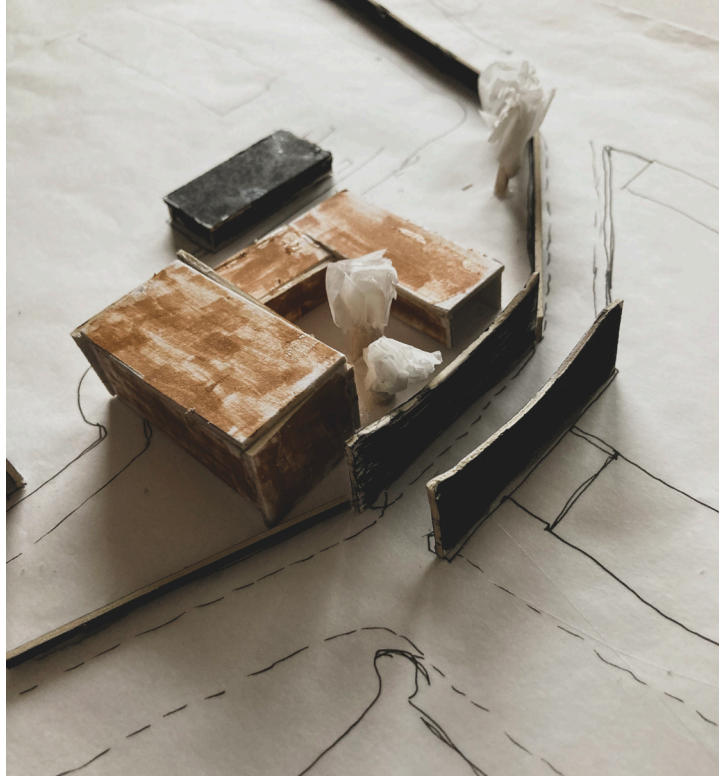
**Mary:** Hi John, have you found a dictionary that you need for your assignment?

**John:** Oh, yes. I have asked librarian and she advised me to look for it in the archive.

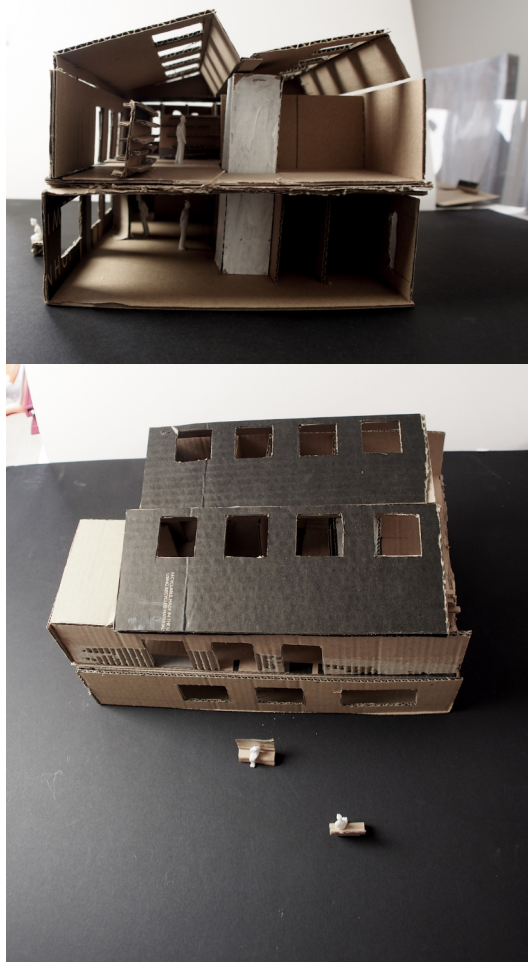
**Mike:** You might try to use a new search tool available in computer room just next to the south entrance.

**Ann:** Oh, there he is. I need to hurry up to meet Mike and discuss our presentation.

*Study of interactions between library users : bay  
window - inner yard (The Library Project)*



*Massing study model on “The Pends” site – an early stages of the library design*



*1:100 model of the north wing of the library*



*Library model for roof light study*





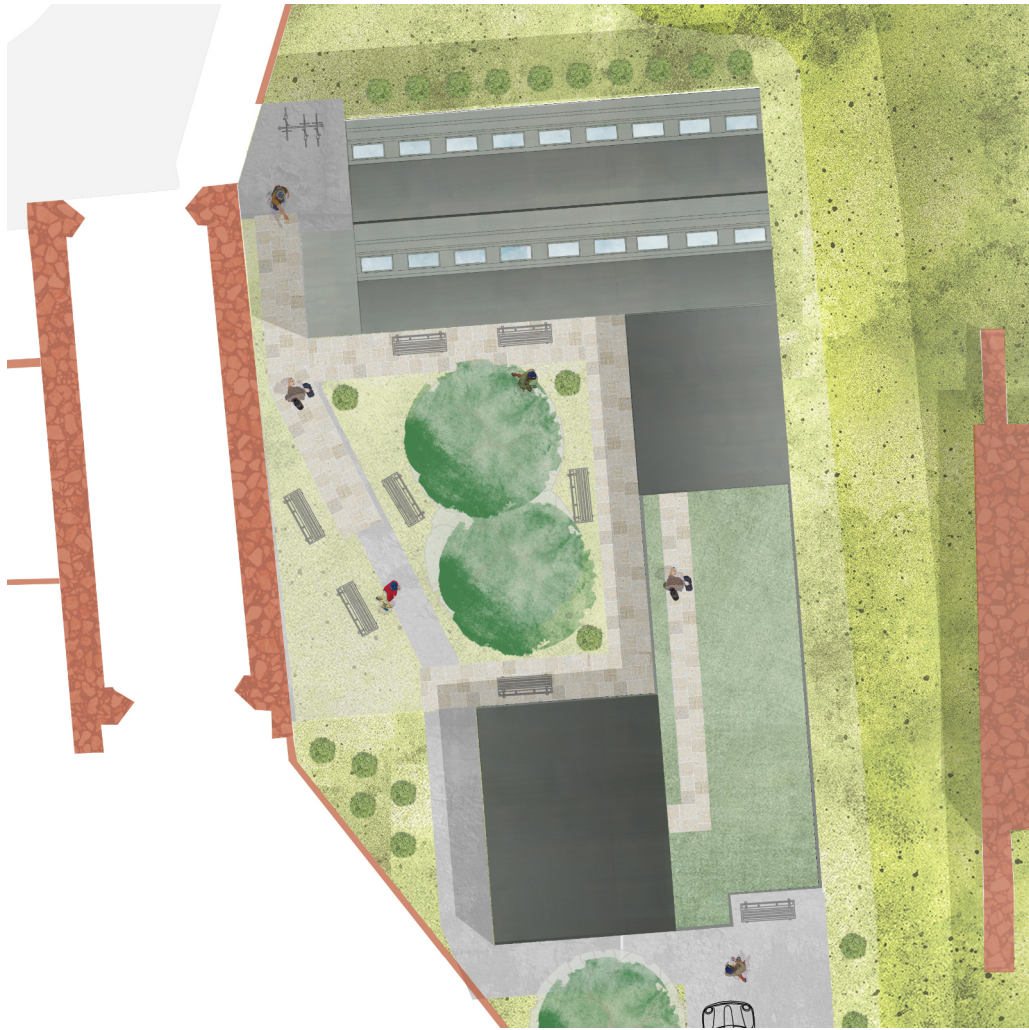
*Elevation study (The Library Project)*



*1:100 Section of The Library Project*



*1:100 East Elevation (The Library Project)*



*The Library Project – landscape strategy*

SOUTH ELEVATION (1:100)



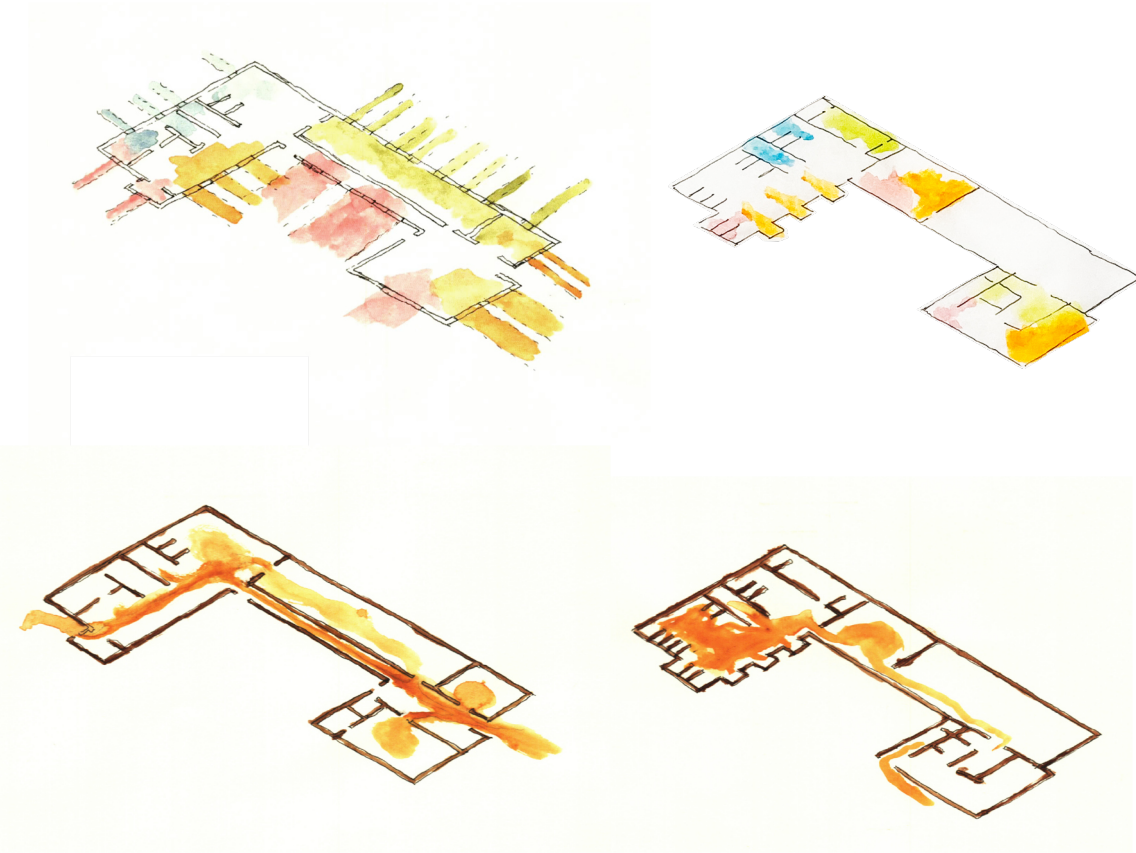
*1:100 South Elevation (The Library Project)*



*1:35 explanatory study of the library building (watercolour sketch based on the digital drawings)*

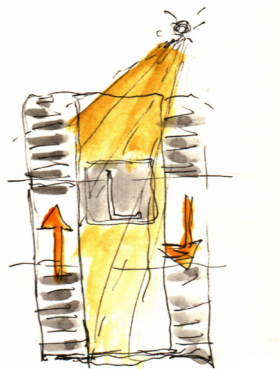
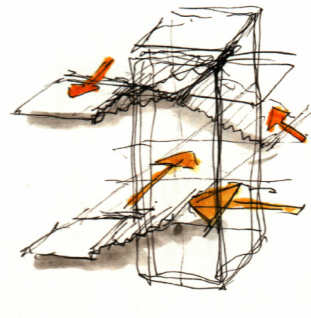
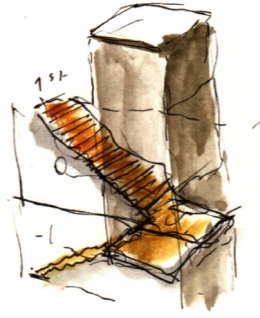


*1:35 explanatory study of the library building (watercolour sketch based on the digital drawings)*



*Parti sketches of light and circulation (The Library Project)*





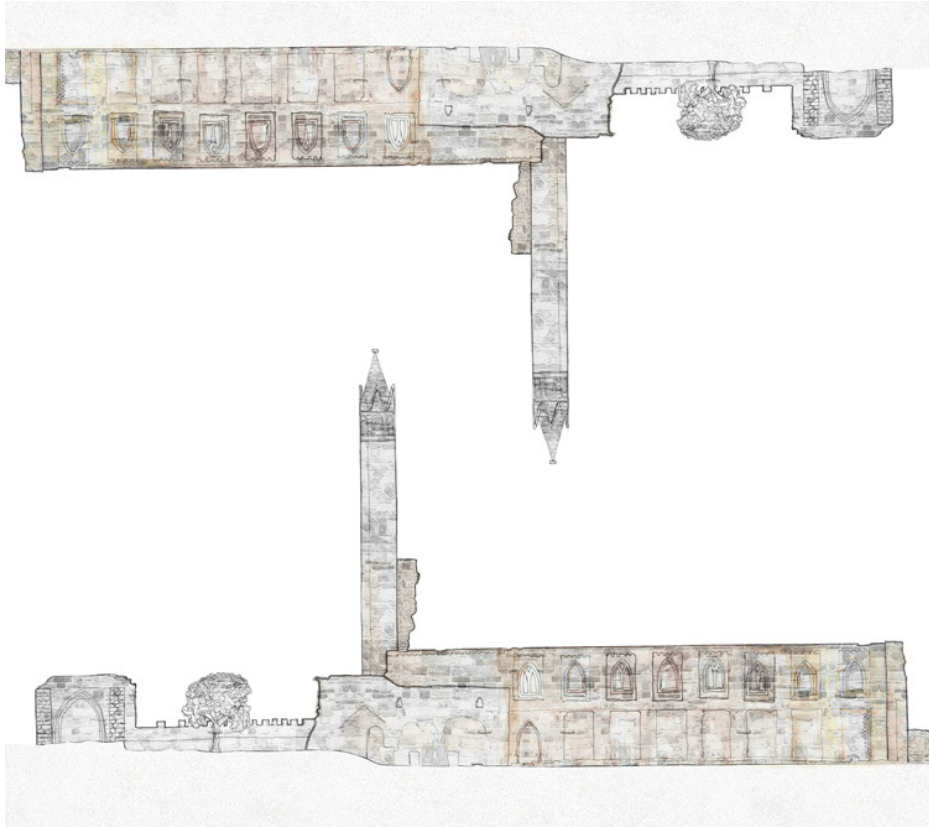
*Parti sketches of main circulation area - lift and staircase (The Library Project)*



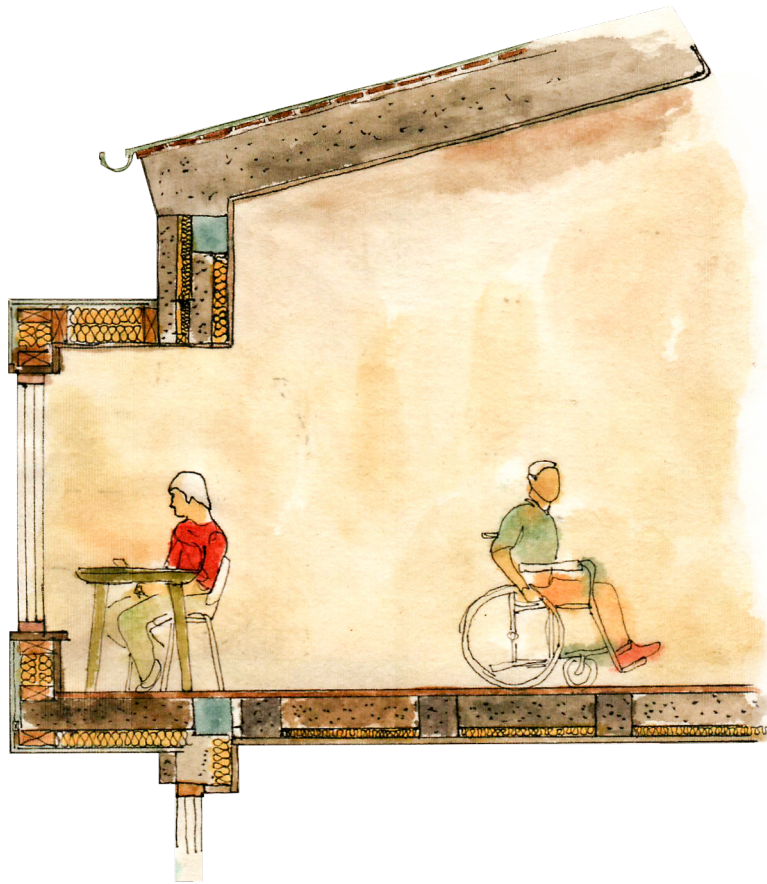
*Librarians #4*



*Librarians #2*



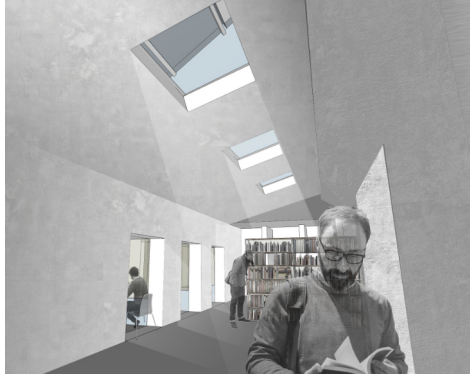
*St Andrews Cathedral*



*Bay window construction detail  
(The Library Project)*



*St Andrews Sailing Club – extension proposal – interior  
visualisation*



*Two point perspective interior and exterior visualisations  
(The Library Project)*



*Thank you*