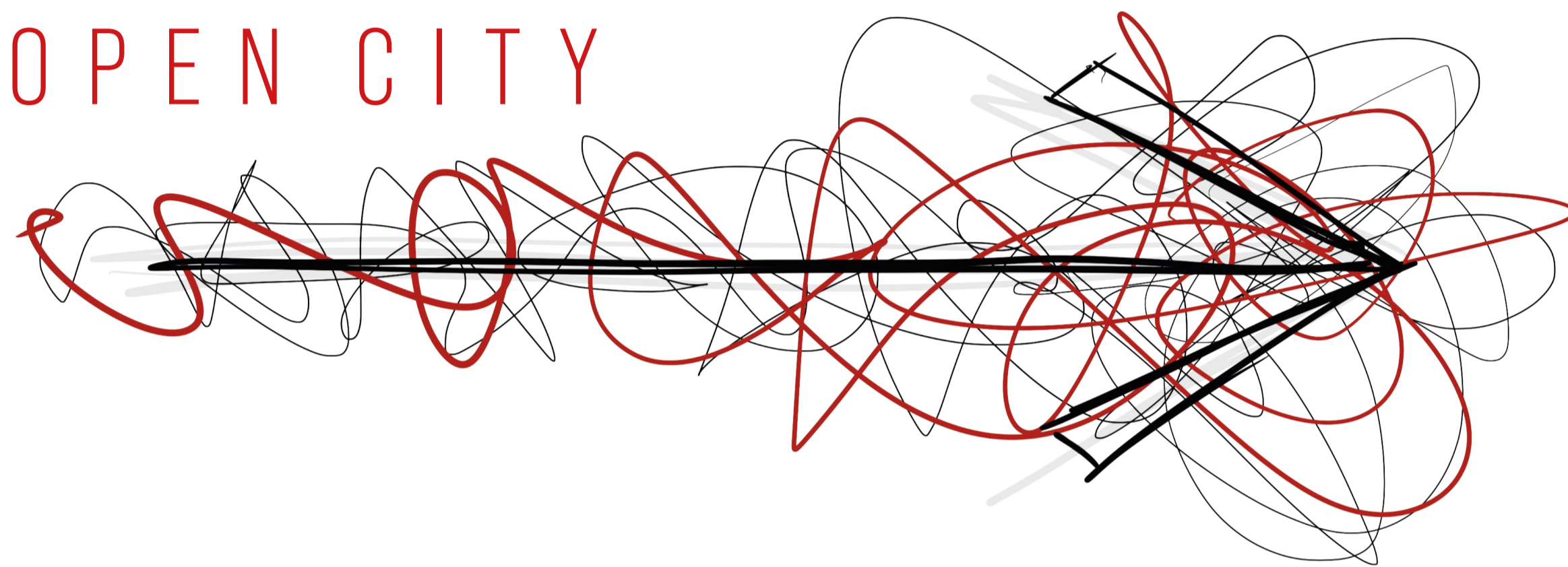


TOWARD AN OPEN CITY



B R I E F

Designing for the Enemy is a narrative which dominated the city for centuries. It's time for a renewed approach to the public realm as a context for inclusion and exchange between citizens. Restructure power and control relationships of the city, create designs which gives citizens the opportunity for expression and engagement. A city develops through its citizens. Therefore, their social / cultural / political development should be seen in the public realm.

The control measures detailed in 5A should be tackled through the adoption of a new approach. This should centre on the creation of open cities which facilitate, encourage, and inspire change.

5A introduced the notion of a tri-part relationship between the digital realm, round table talks, and protest. This notion is translated into more broad terms through programmed interventions: to Think, to Discuss, to Action. The focus will continue to be on face-to-face exchange through these programmes and the subsequent activities they facilitate.

The aim is to provide a renewed future, Toward an Open City that is built for change. Cities which allow their citizens the space and means to think, discuss, and act on what they think best for the city. Increasing engagement and granting agency to citizens through everyday intervention, until it becomes part of the city's identity, and influences how it evolves.

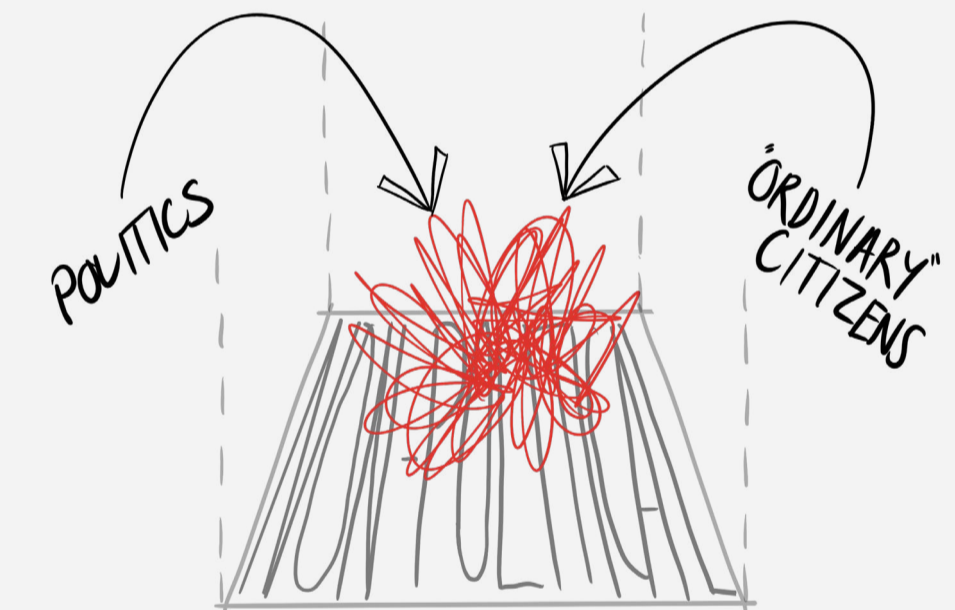
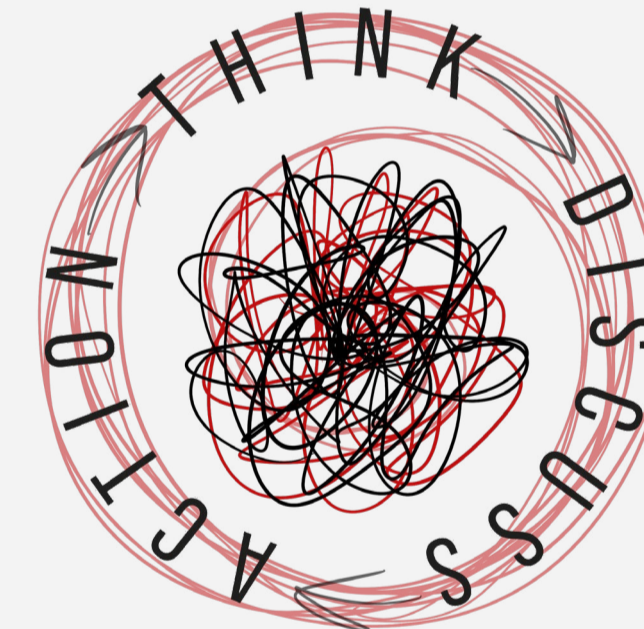
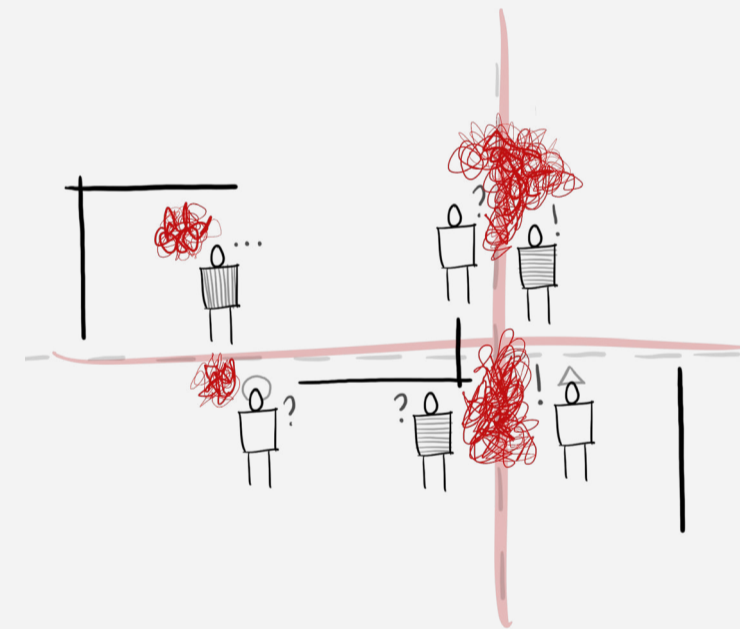
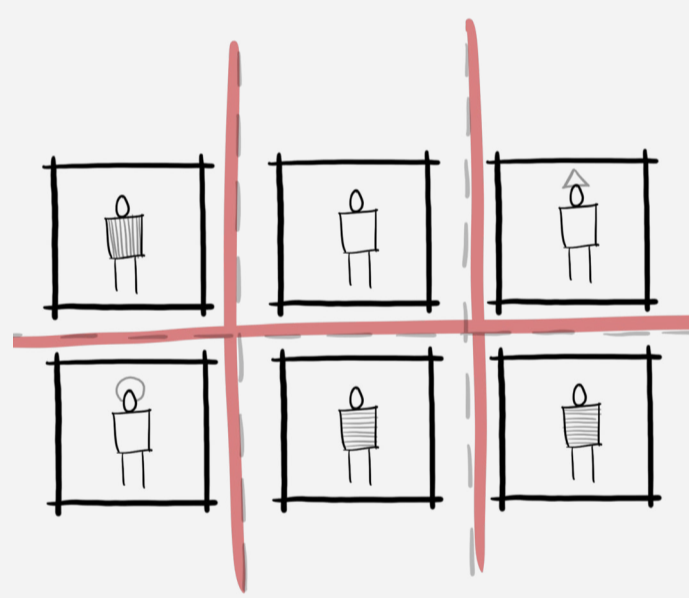
M A N I F E S T O

Designing for the Enemy, centred on acknowledgment of control measures and mechanisms enacted within the city, to allow for an informed change to the relationship between architecture, power, space and politics.

Reactionary design response should be resisted. Creating open spaces in the city, adopting approaches of exchange, disorder, and spontaneity.

Commit to the emancipation of the citizen from the strictures of the current city: a city which implicitly places limitations on free will and expression. Reject these fractured parts formed of internal walls, in favour of the city as a whole, as a network, as a common entity, and as a frame of mind.

Provide tools to citizens for enacting change. Begin the journey Toward an Open City by reinstating exchange, restoring constructive public discourse, engagement, and understanding.



A I M S 1-Democracy as process. | 2-Normalise and reframe politics. | 3-Ensure every citizen has the means to express themselves in their city. | 4-Designed for the city, to be used by the citizen. | 5-Prequel to true transformation. | Providing the initial spark, in hopes that through use and time they will blaze a new path for society. Renewed collaboration and equality, which tackles the social, cultural, and political issues we face in the contemporary city.



X

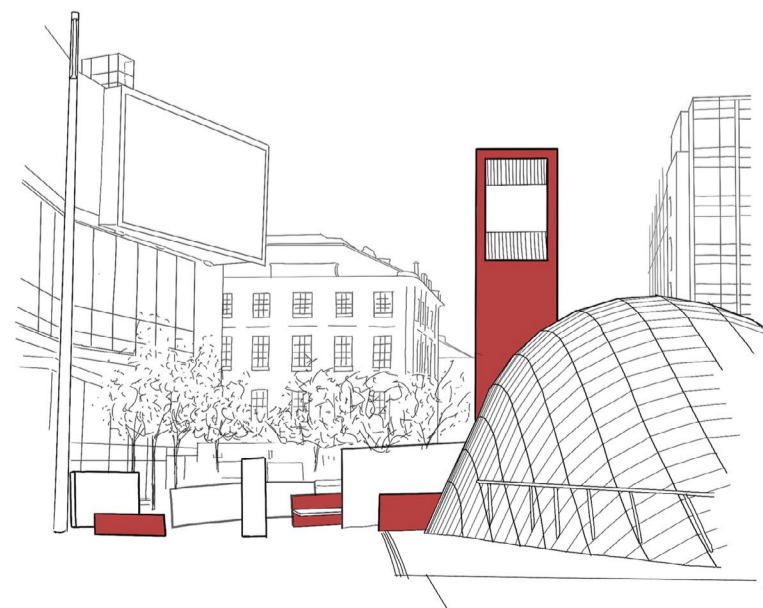
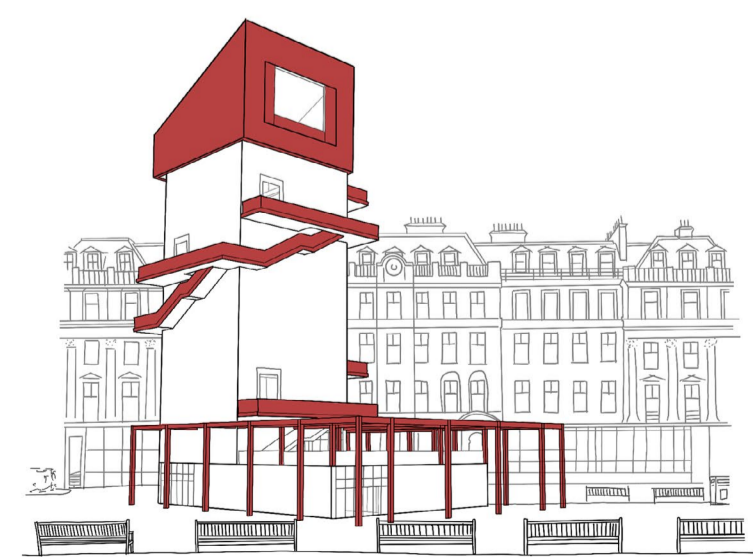
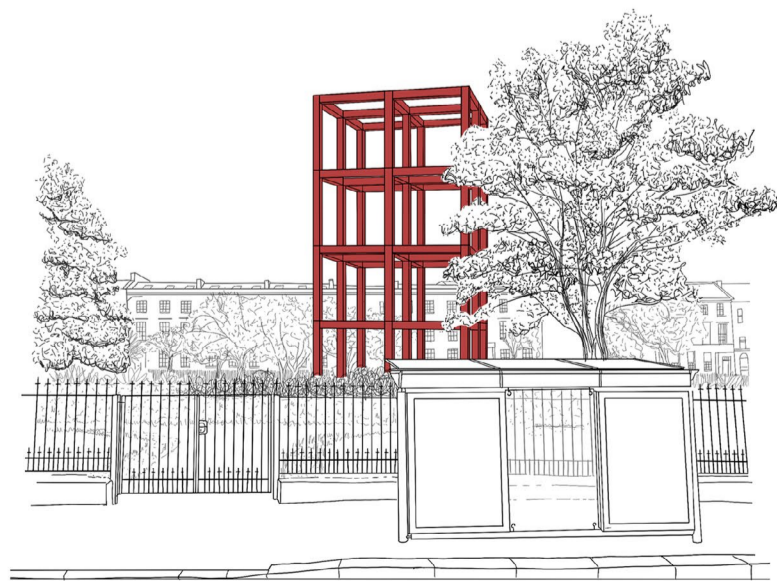
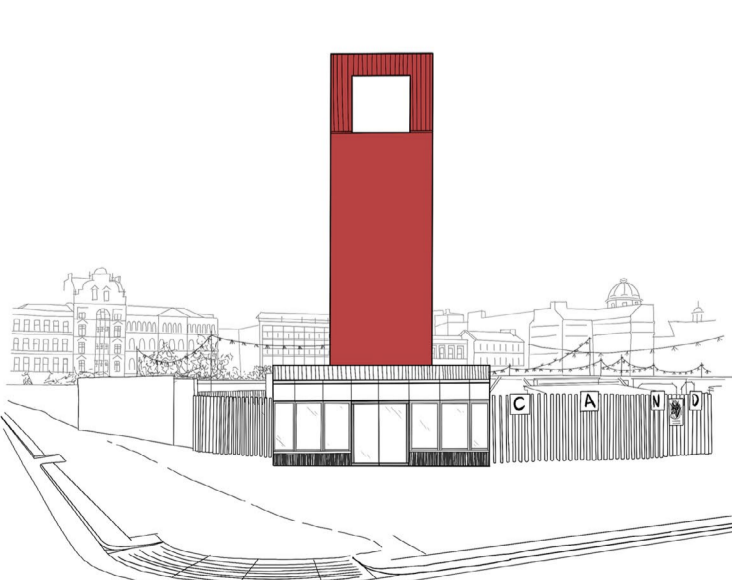
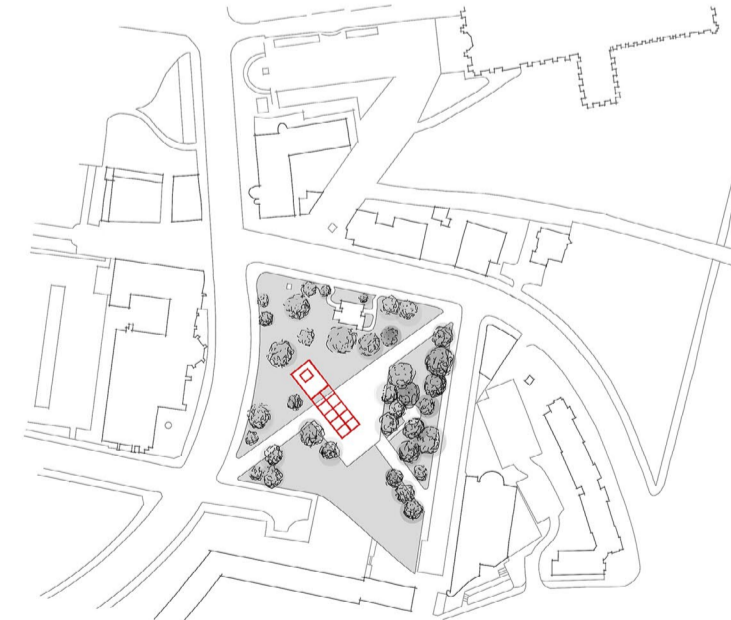
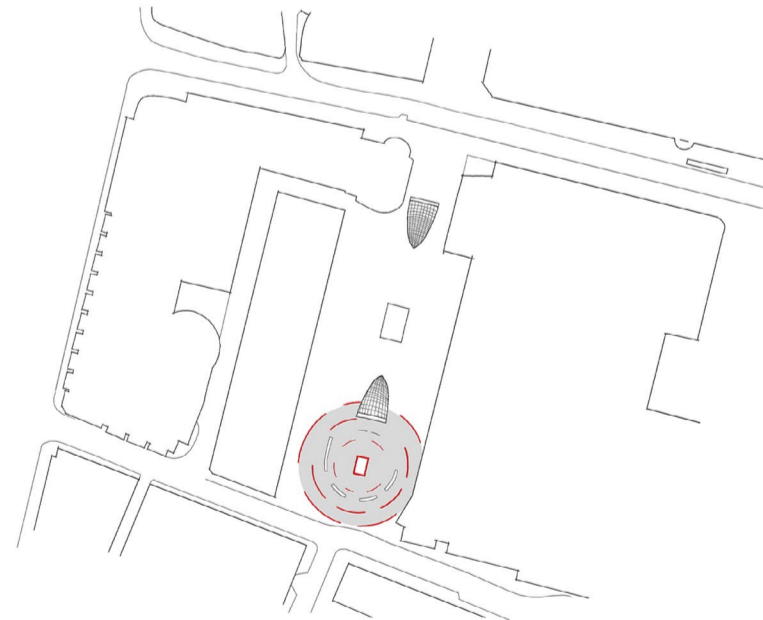
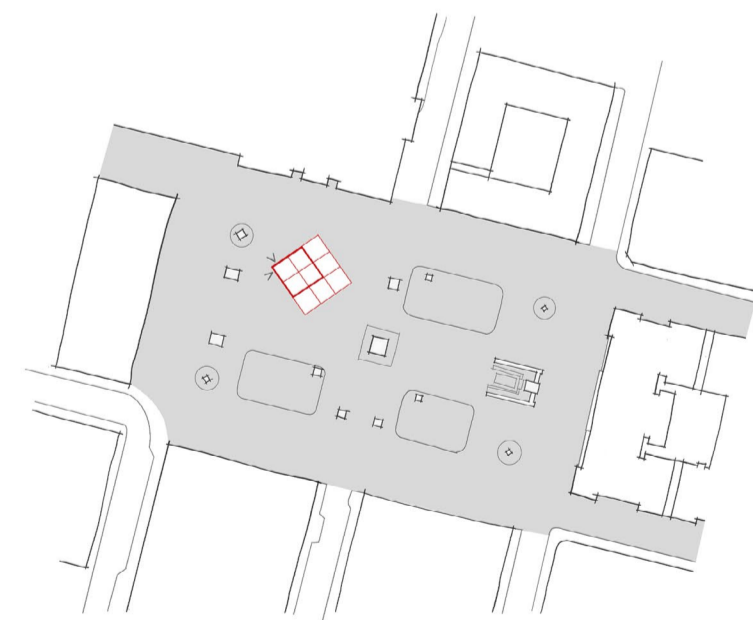
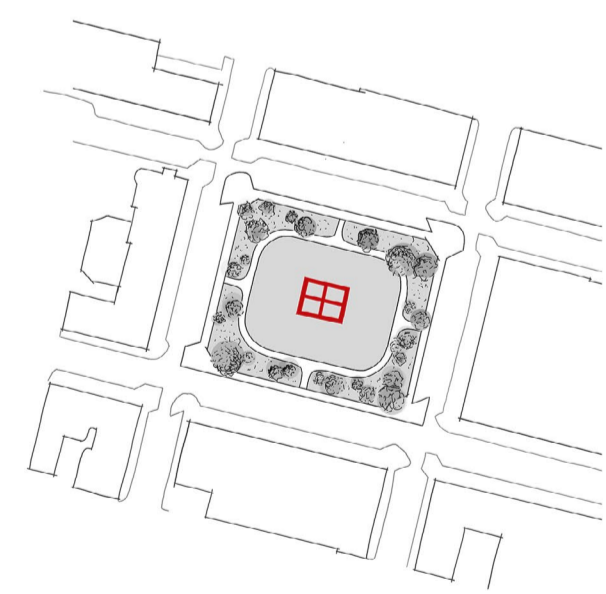
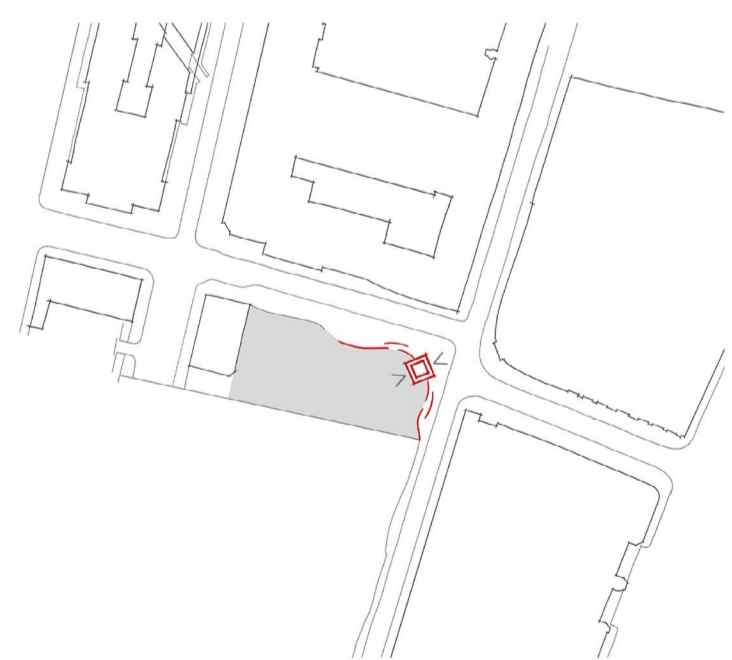
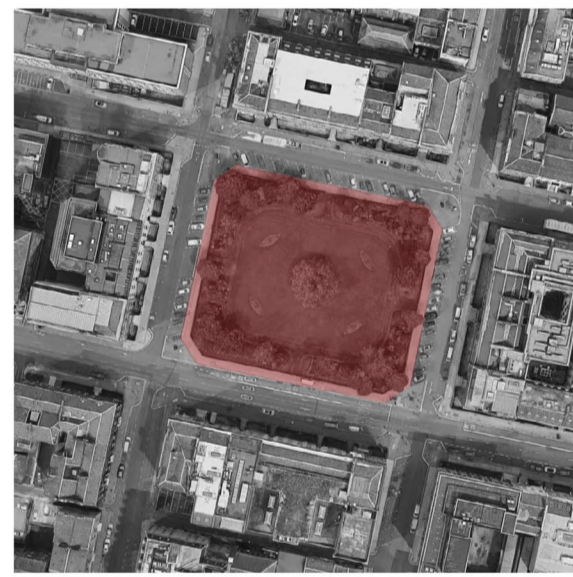
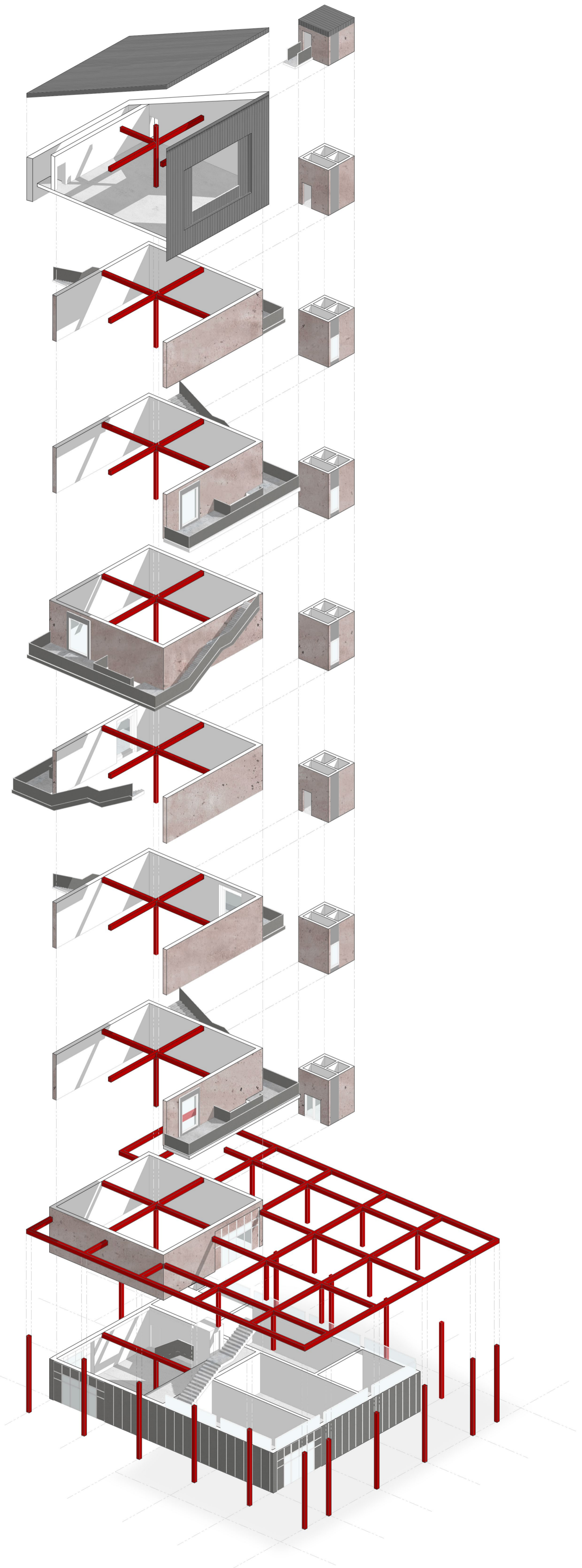
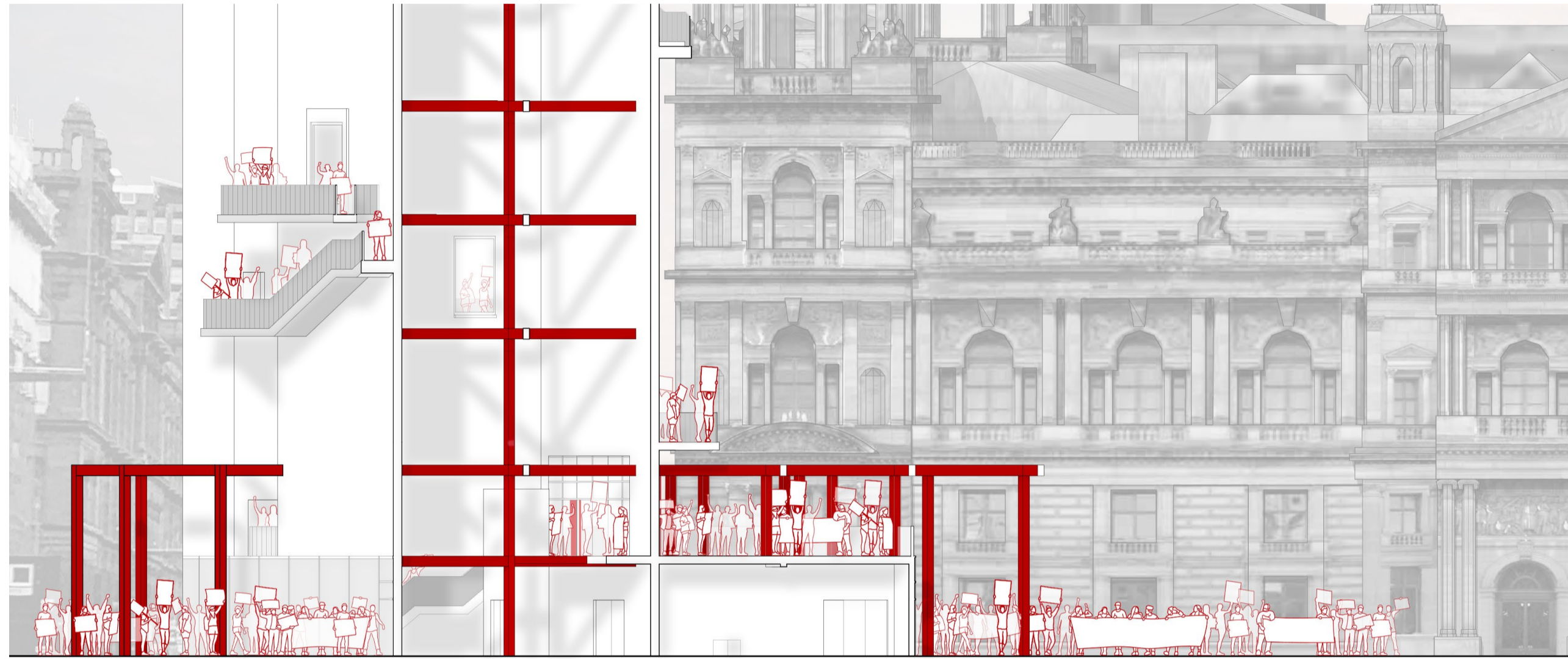
The programme and activities of Arx are rooted in citizen ACTION. The current city space which embodies this energy must be its urban squares, symbolic spaces of communication, assembly and expression.

In reference to Glasgow, various squares were considered. The focus resting on variance in scale, the current role of the square in the city, variety in location, and footfall of citizens both by chance and as a destination.

Arx looks to embody the meaning of the word, become a fortress for the citizens, a refuge. An entity which can be equally and freely experienced by all users. Illustrated architecturally as a beacon within the city, re-appropriating architectural monuments of power / control / the state, and instead granting it to the citizens. All whilst embodying the symbolic notions of expression and democratic freedom associated with an urban square.

These monuments themselves then create a network. Points of interest and expression throughout the city which may be used as beacons of activism, to enhance the experience of assembly and action in an open city. Each will be installed with the relevant equipment for enhancing the experience (speakers for protests etc.) as well as flexible structure to allow various inhabitations, uses and activities for the building as required.

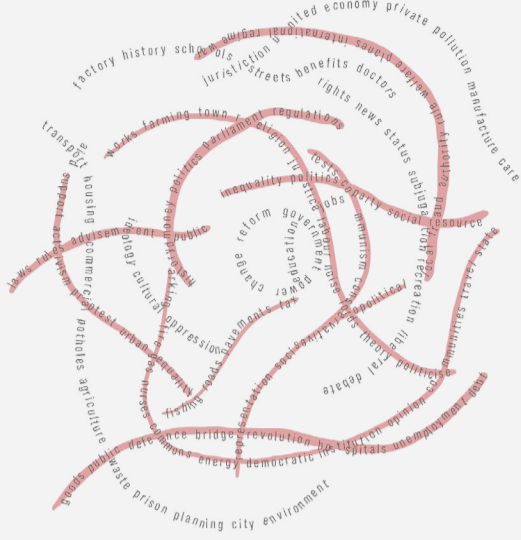
B



P R O G R A M M E

The proposed interventions centre on three key functions: to think, to discuss, and to action. Through user adaptation they may become: to contemplate, to overhear, to research, to familiarise, to learn, to connect, to believe, to provoke, to debate, to chat, to agree, to conflict, to disagree, to investigate, to support, to reason, to communicate, to protest, to celebrate, to assemble, to educate, to rally, to participate, to advocate, to gather, to perform.

learning regulation trade strategy cultural agenda resource opportunity labour opportunity waste consumption conservation rights news status subjugation recreation liberal laws trade theory government politician agriculture works regulations notes achievement debate public parking fire gun violence consumer democratic organisation opinion communication travel address representation state socio-political local fraud authority role wellbeing planet international regime jurisdiction united monarchy jobs war private pollution manufacture factories industry history suburbs cinema healthcare sports facilities weather defence bridges hospitals airports employment care elderly television transport boat housing village commercial genetics agriculture waste prices graffiti spending planning urban concepts environment pension spending war army leisure wellbeing allowance rent maternity support sheltered money wellbeing strength construction shipping rivers aviation history canal international protest wellbeing revenue equality civil representation diplomatic representation deficit negotiation federation politician ice agriculture



K E Y A C T I V I T I E S

- Contemplate
- Question
- Overhear
- Research
- Familiarise
- Learn
- Connect
- Belief
- Provoke
- Debate
- Chat
- Agree
- Conflict
- Disagree
- Investigate
- Support
- Reason
- Communicate
- Protest
- Celebrate
- Assemble
- Educate
- Rally
- Participate
- Advocate
- Gather
- Perform

B R A N D I N G

The branding is designed to unite the imagery of the interventions. To be featured on signage, posters, artworks, fliers about events, talks, or debates. It encompasses the ambiguity and complexity of engagement but in a fun way. The unregimented shape creates relaxed familiarity and encourages citizens not to be scared of the implications of discussing politics, society or culture. Encouraging them to not take it all so seriously, just have a think, form ideas, have a chat and discuss with others, then if you feel inspired, drawn to do something, take action.



EXHIBITION

Provocation:
Glasgow's
Future Trades

10 - 31
August
2021

ARX

George Square
Official Opening 17.00

Featuring local artists and creators.
Supporting local, small businesses
and entrepreneurs.

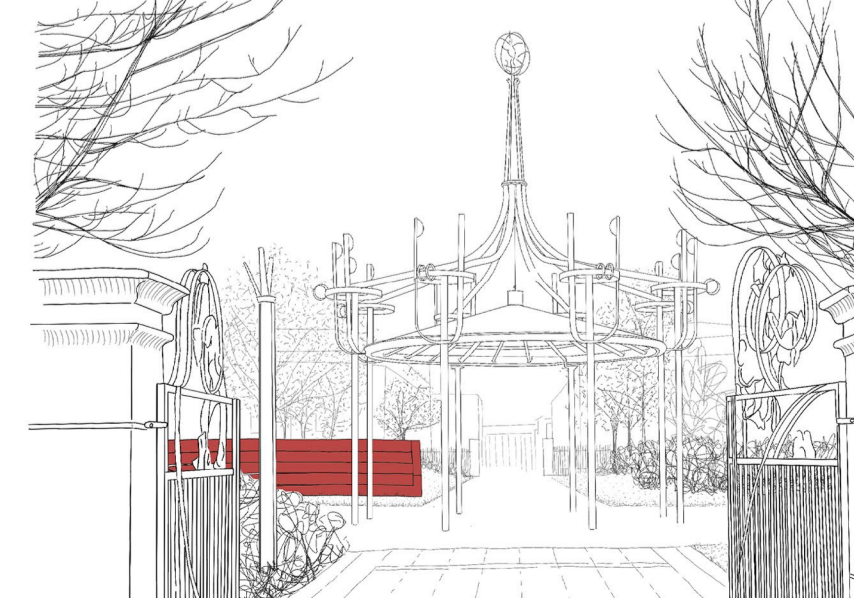
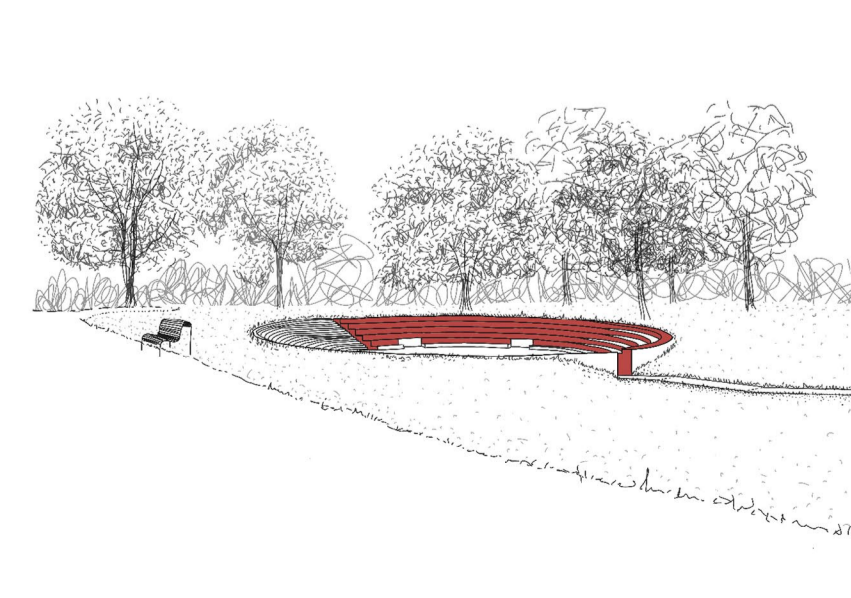
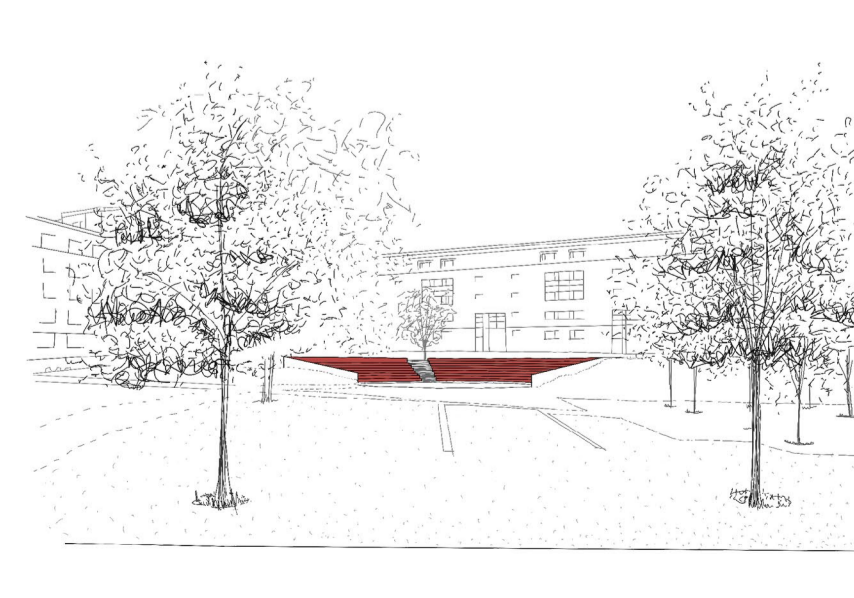
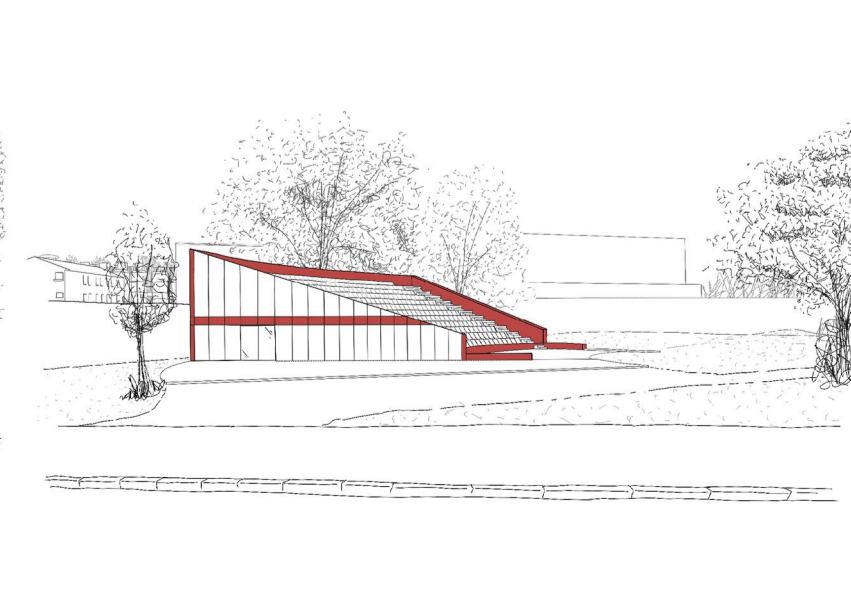
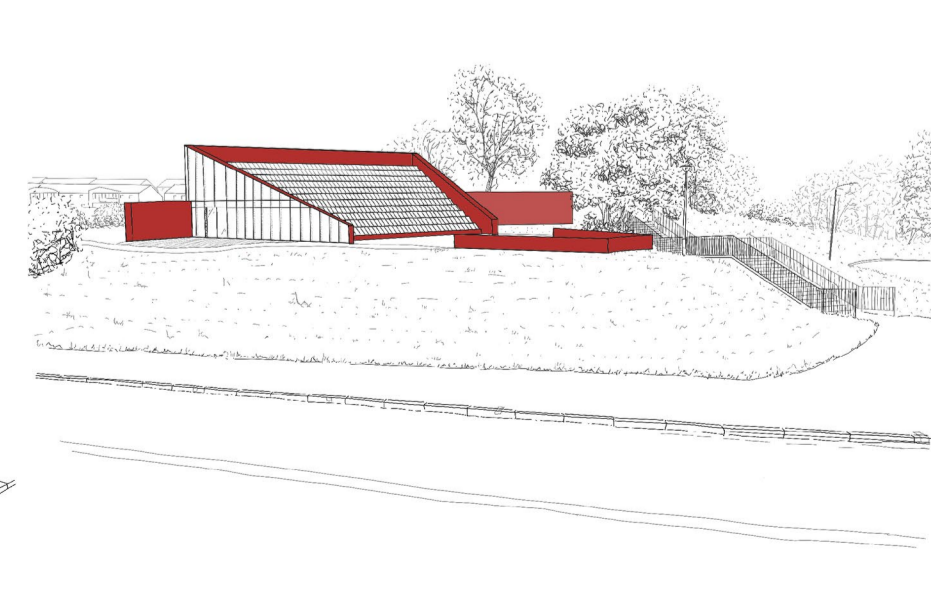
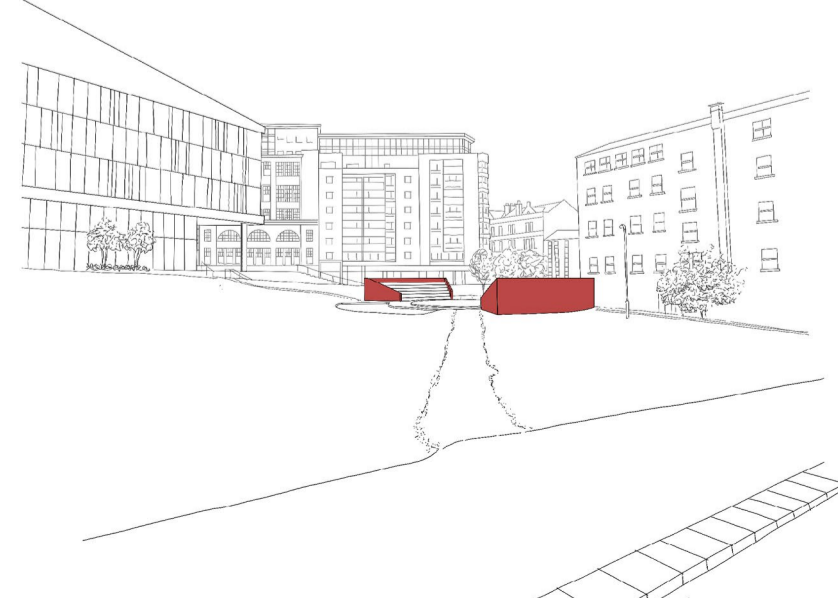
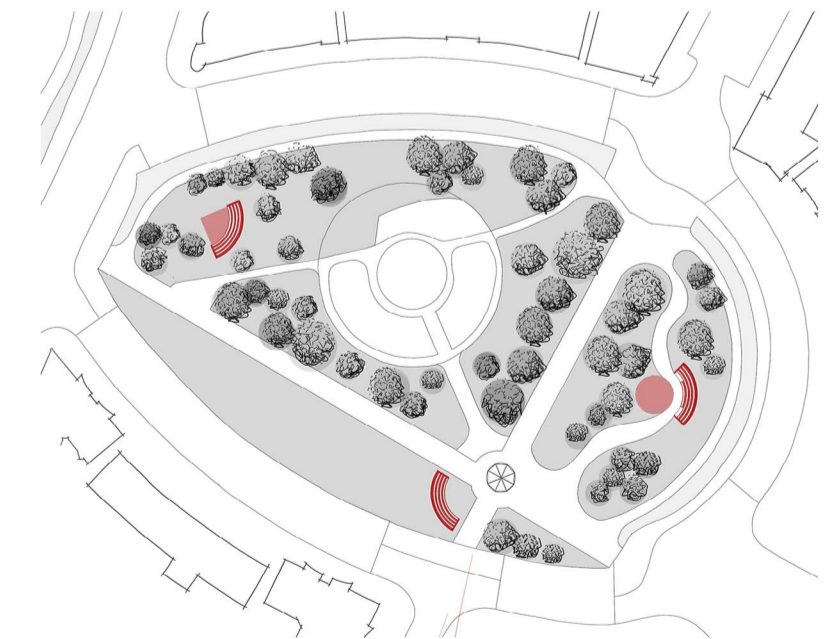
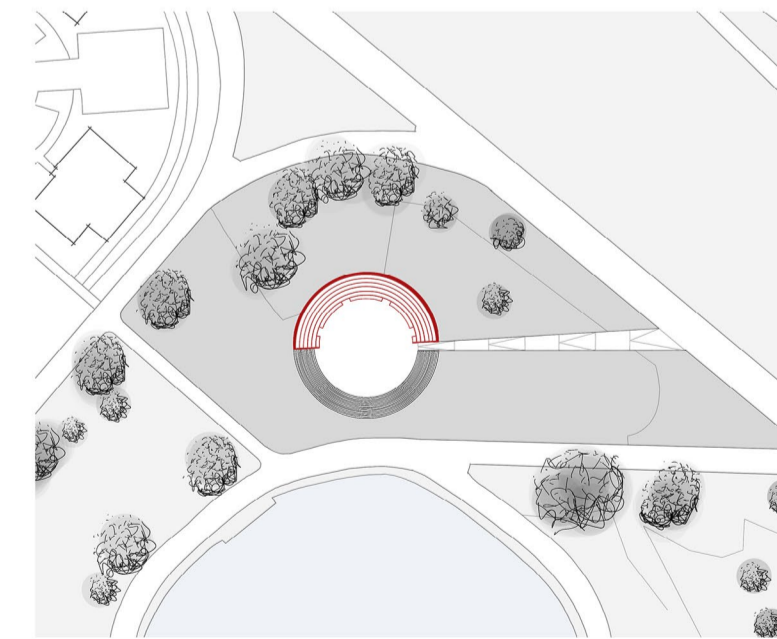
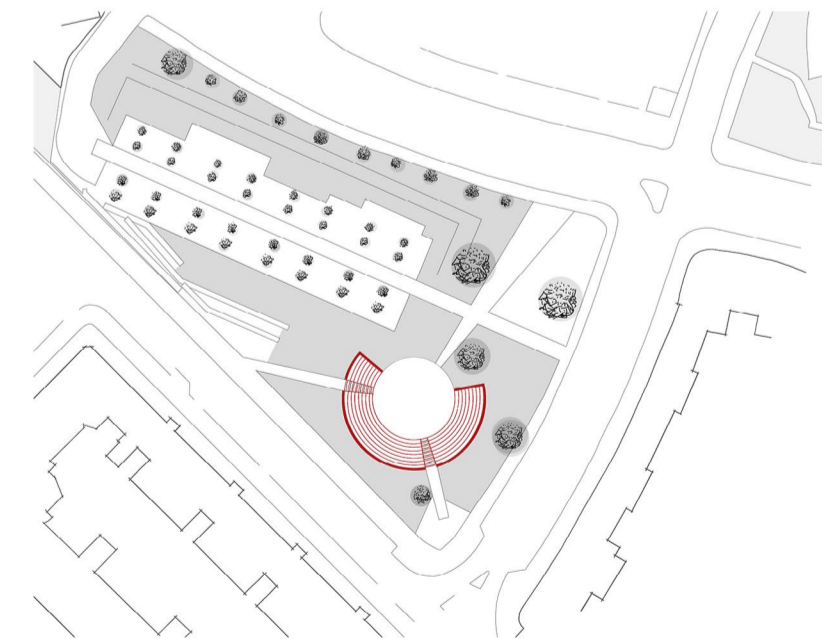
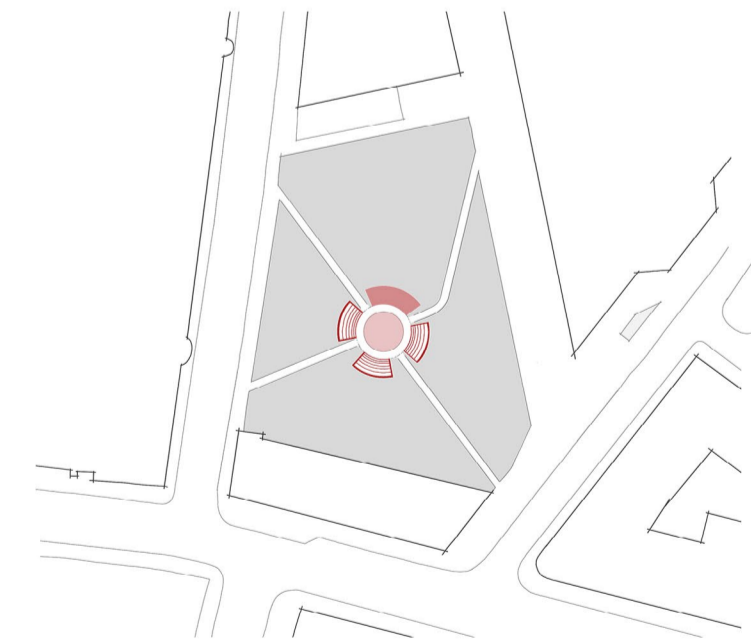
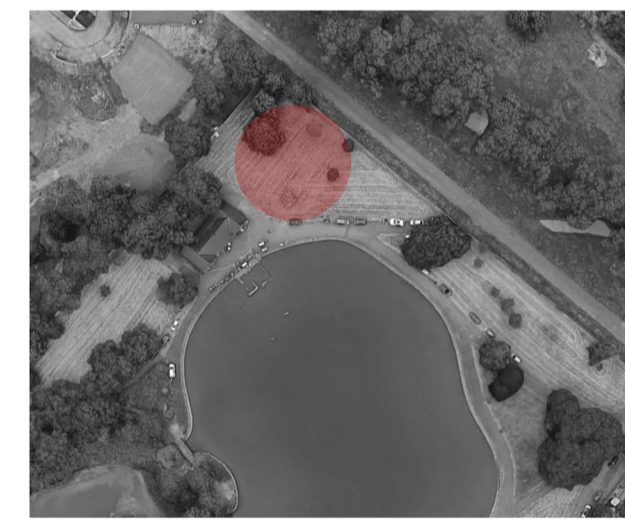
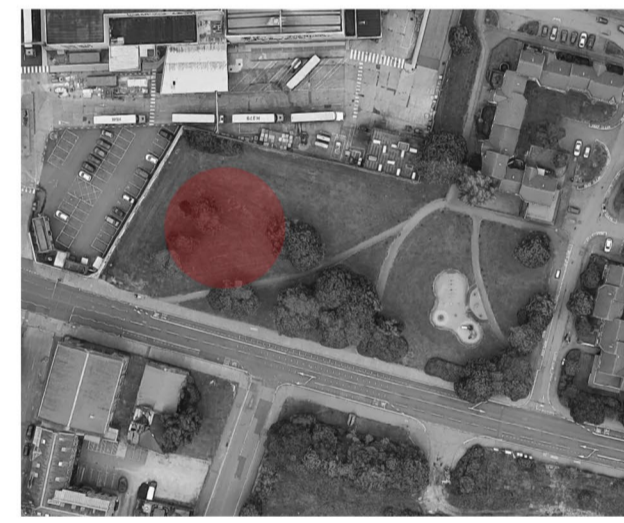
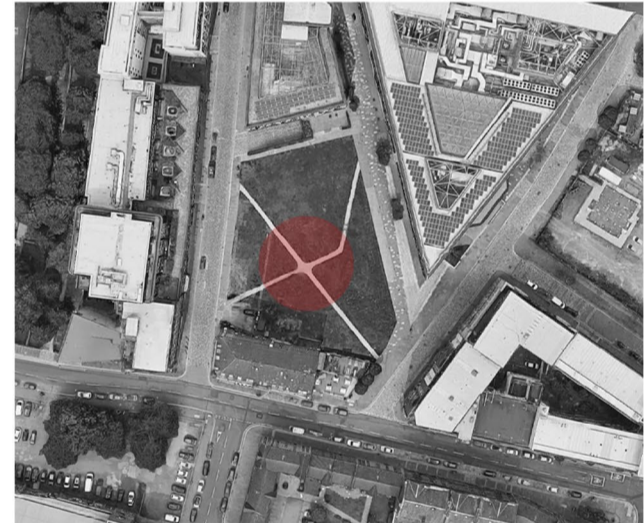
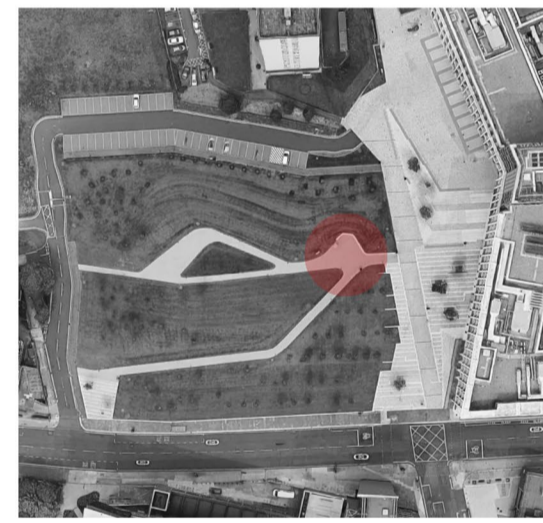
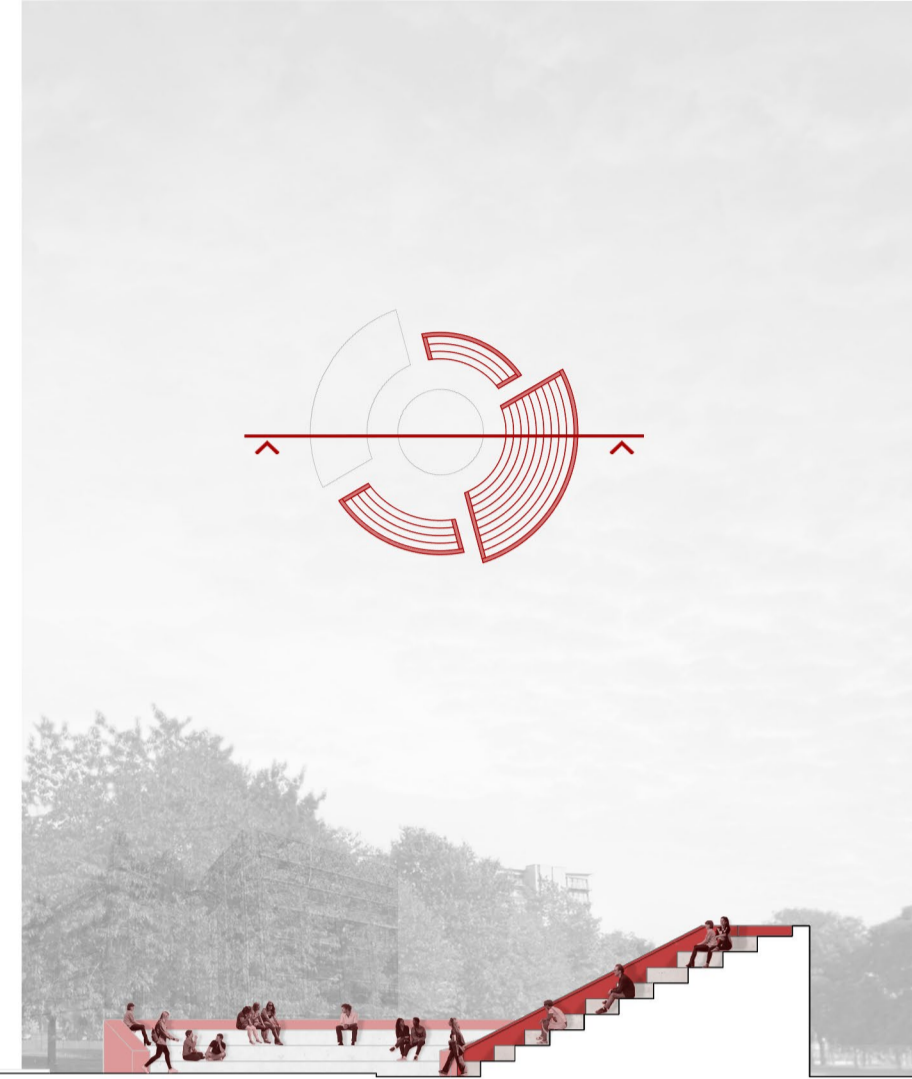
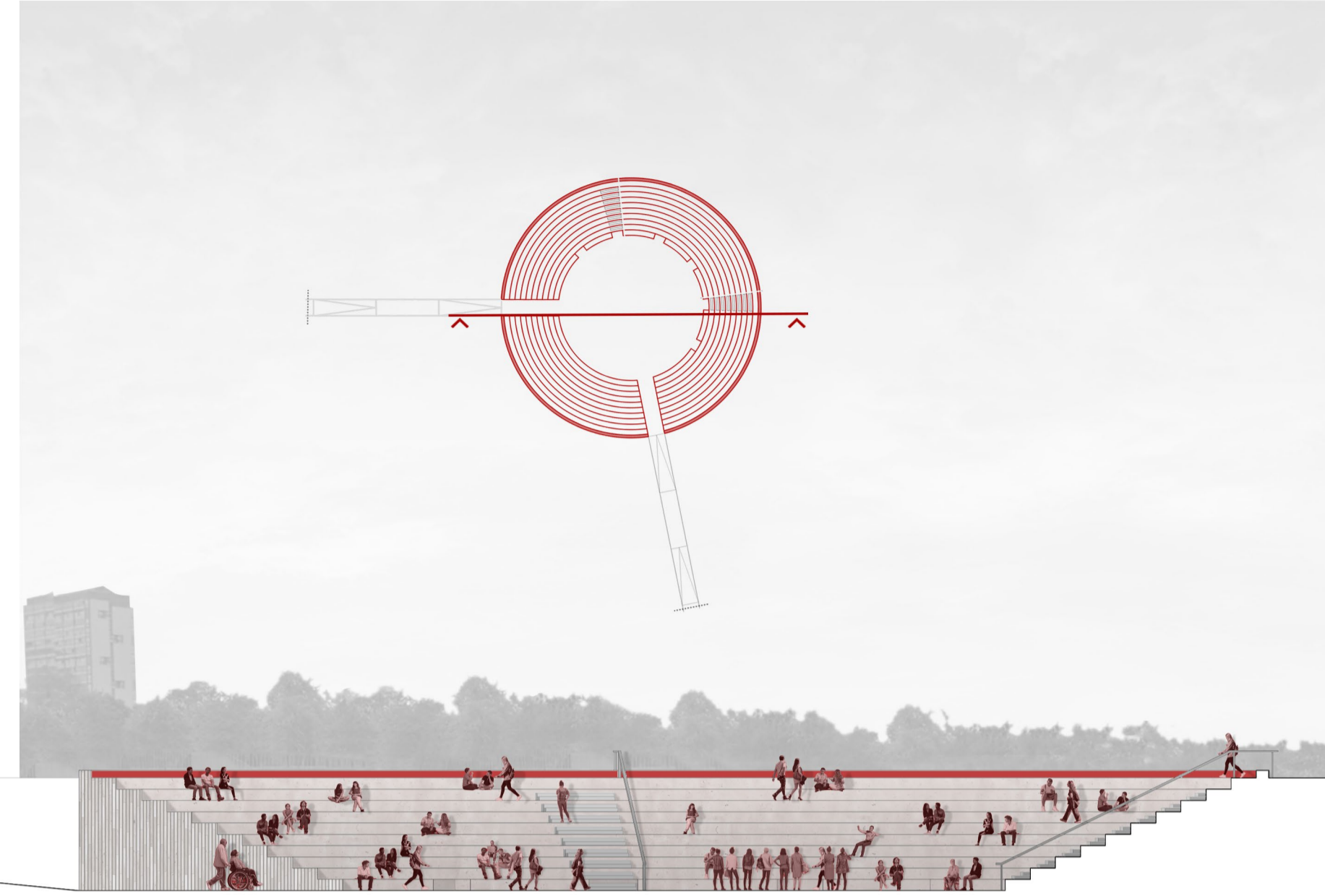
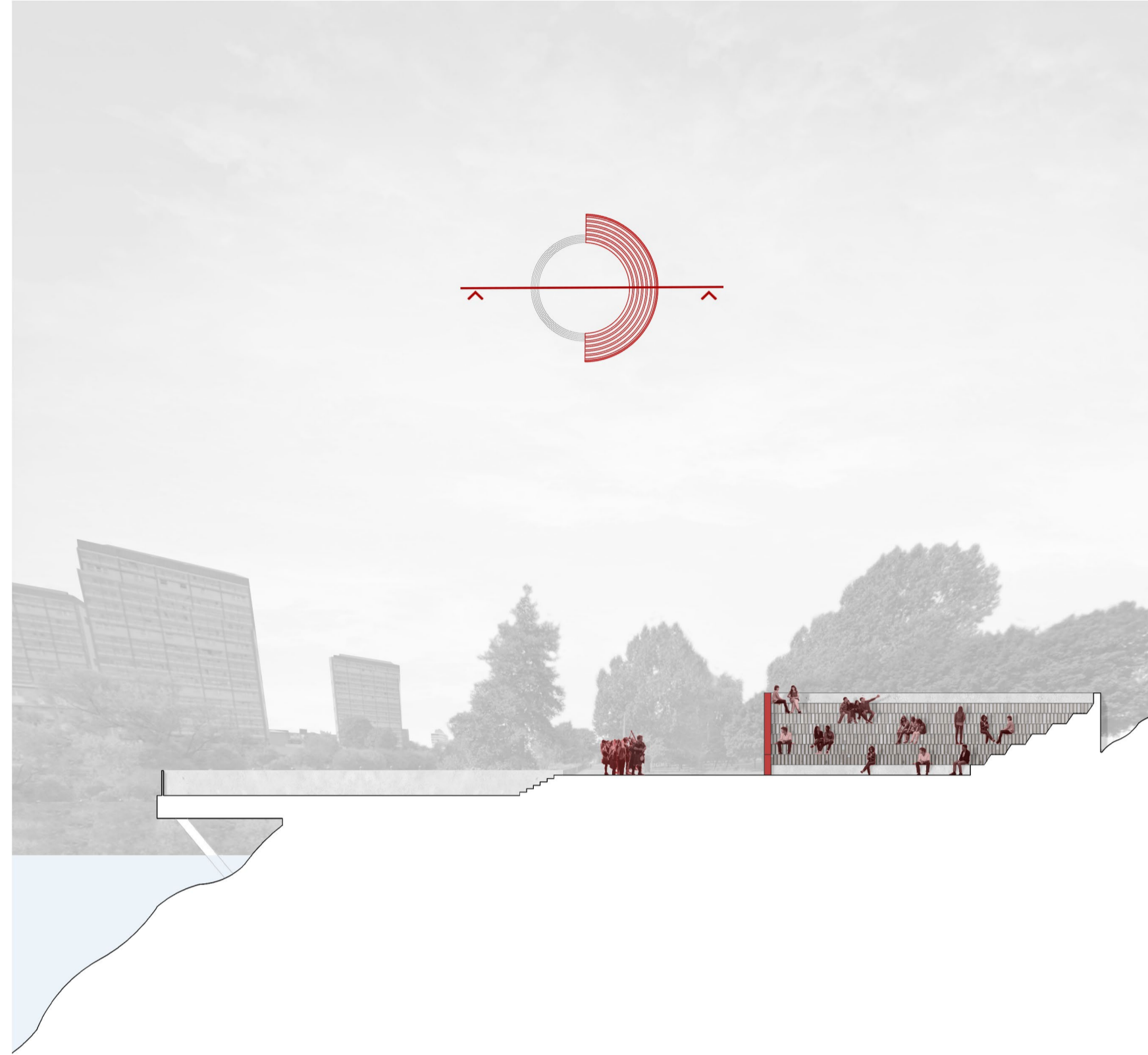


PHYX

The programme and activities of Phyx are designed to encourage citizens to DISCUSS. These aim to envelope pause points in the city. In Glasgow, these pause points are often formed by green spaces. Green spaces are often where people slow down or stop for a moment before carrying on. These spaces emerge where the city stops, granting a particular opportunity for primary and secondary engagement with the programme. The footfall of citizens going to the spaces as a destination encourages primary engagement and the footfall of those passing by increases opportunities for secondary engagement (exposure to new ideas, experiences, discussions).

The reintroduction of the ancient form which has since been adopted and privatised by theatres or parliaments, also reinstates the identifiable form associated with engagement in the public realm. Accessible to all, allowing citizens to gather together in their common moments.

The form is adapted to encourage discussion, ensure equality in terms of direction of focus and proximity, in addition to ensuring everyone can see and hear each other. The latter being requirements stated by Aristotle to be essential in the creation of democratic space (Sennett, 2019).



DEBATE DEBATE DEBATE DEBATE DEBATE
IF YOU'RE

Initial Speakers / Provocateurs:
Jonathon Charley
Darren McGarvey
Limmy

5th June 2021
PNYX
Glasgow Green
1500 - 1630

LOOKING FOR

DEBATE DEBATE DEBATE DEBATE DEBATE

Free, open discussion of ideas.

EVERYONE WELCOME!

Political Representatives (all parties) have been invited to attend and will be present for discussion following the debate.

CHANGE

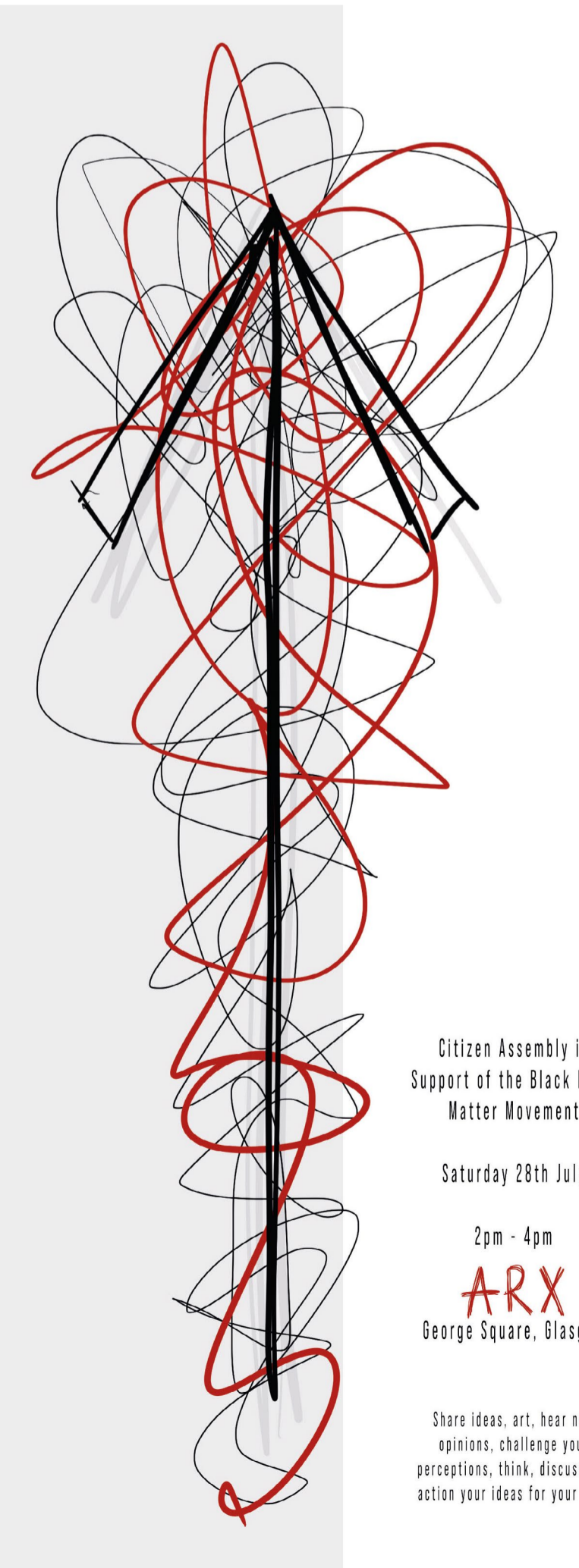
No opinion is wrong.

Discussion is encouraged to be fair and considerate and will be mediated if necessary

All opinions and experiences are valid.

THIS IS IT.

5.6.2021



CITIZEN ASSEMBLY

1400 28.7.2021

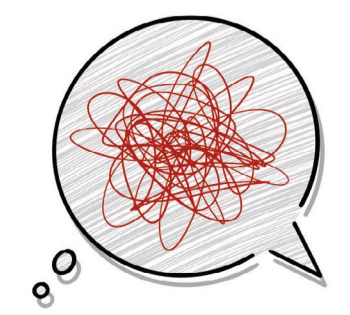
Citizen Assembly in Support of the Black Lives Matter Movement

Saturday 28th July

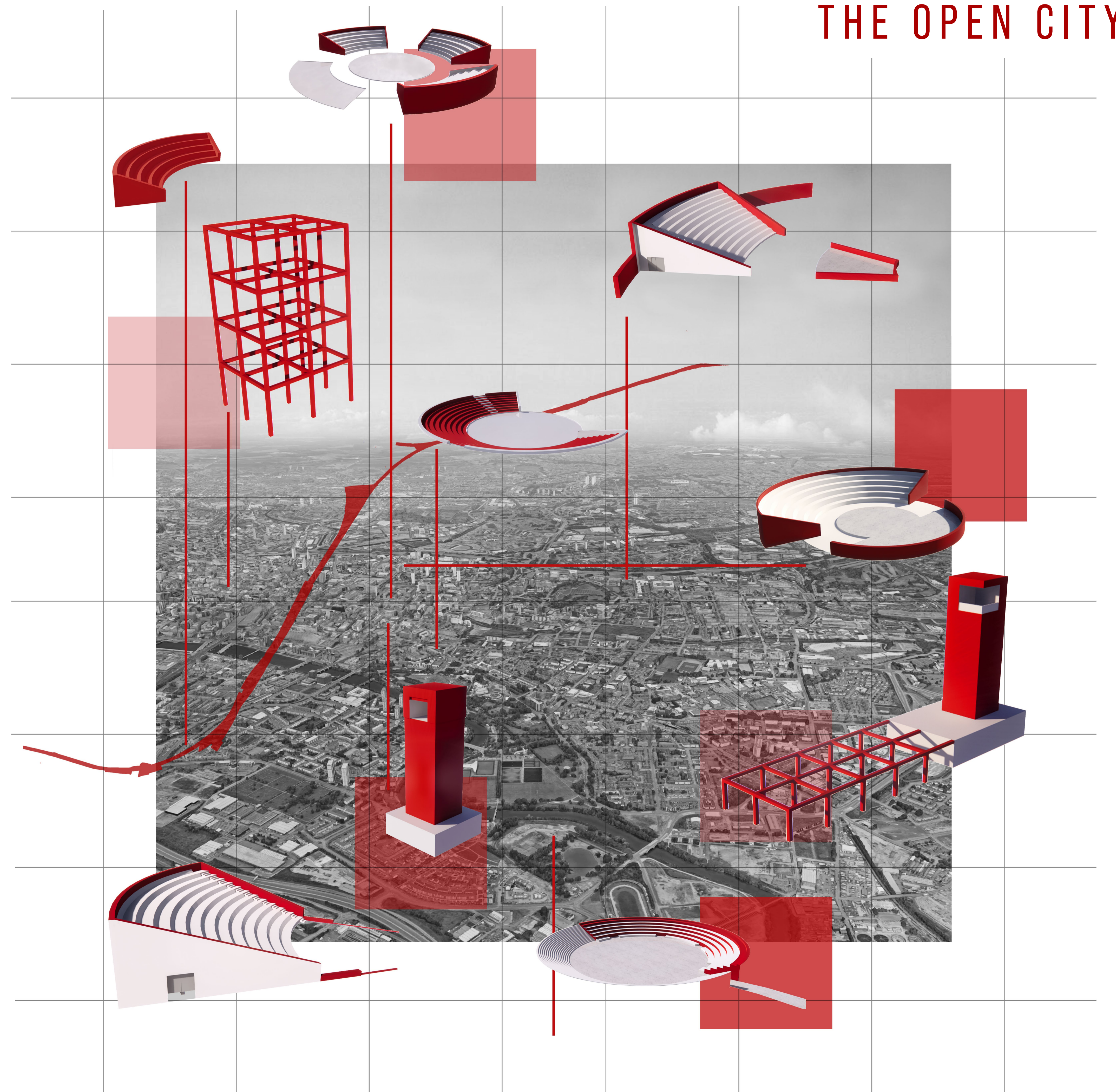
2pm - 4pm

ARX
George Square, Glasgow

Share ideas, art, hear new opinions, challenge your perceptions, think, discuss and action your ideas for your city.



THE OPEN CITY



R

Iter looks to surpass boundaries within the city, slowing citizens down, allowing time and space to THINK and experience others. In Glasgow, it removes focus from the theorised connectivity and simultaneous citizen disconnect granted by the cities roads and motorways. Instead it assumes a largely disused railway track which flows through the centre of the city.

E

The focus of this design is the holistic connection provided, the experience of layering another street or iter, within the city, and the connection points introduced in different areas. It offers a new completely pedestrianised route, removing the intrusion and speed of the car returning freedom of movement over the speed of movement. It draws people closer together and transcends boundaries whilst utilising acts of compression and connecting different parts of the city similar to that of the High Line in New York or Luchtsingel in Rotterdam.

T

Through use various additional functions may be assigned, parks, coffee shops, pnyx, inhabitation of the small units introduced: all activities which are conducive to slowing down and connecting people. Physical and community contact, people in contact with each other, their surroundings, and their city. Seating which enables people to sit differently to encourage spontaneous interactions. A peoples place of connection, common ground.

